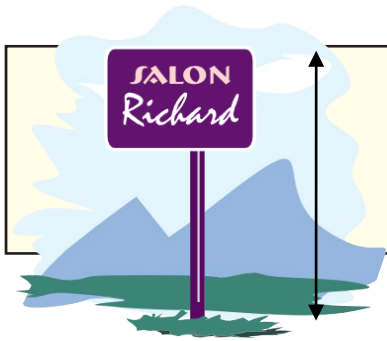
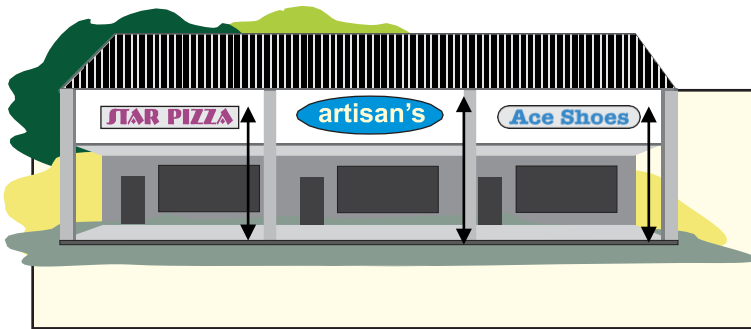


Sign Height for Pylon and Ground Signs



For pylon and ground signs, the height shall be measured from the ground level at the base of the sign to the top edge of the sign.

Sign Height for Wall Signs

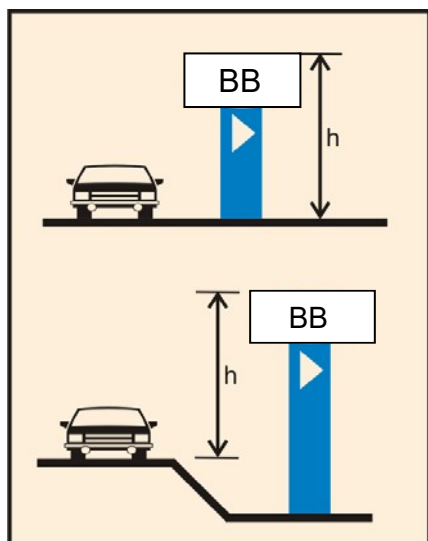


For wall signs, the height shall be measured from the base of the building below the sign to the top of the sign face.



Pump island canopy signs are considered wall signs. For wall signs, the height shall be measured from the base of the building below the sign to the top of the sign face.

Sign Height for Billboard Signs



For billboard signs, the height shall be measured from the elevation of the centerline of the adjacent road to the top of the sign.