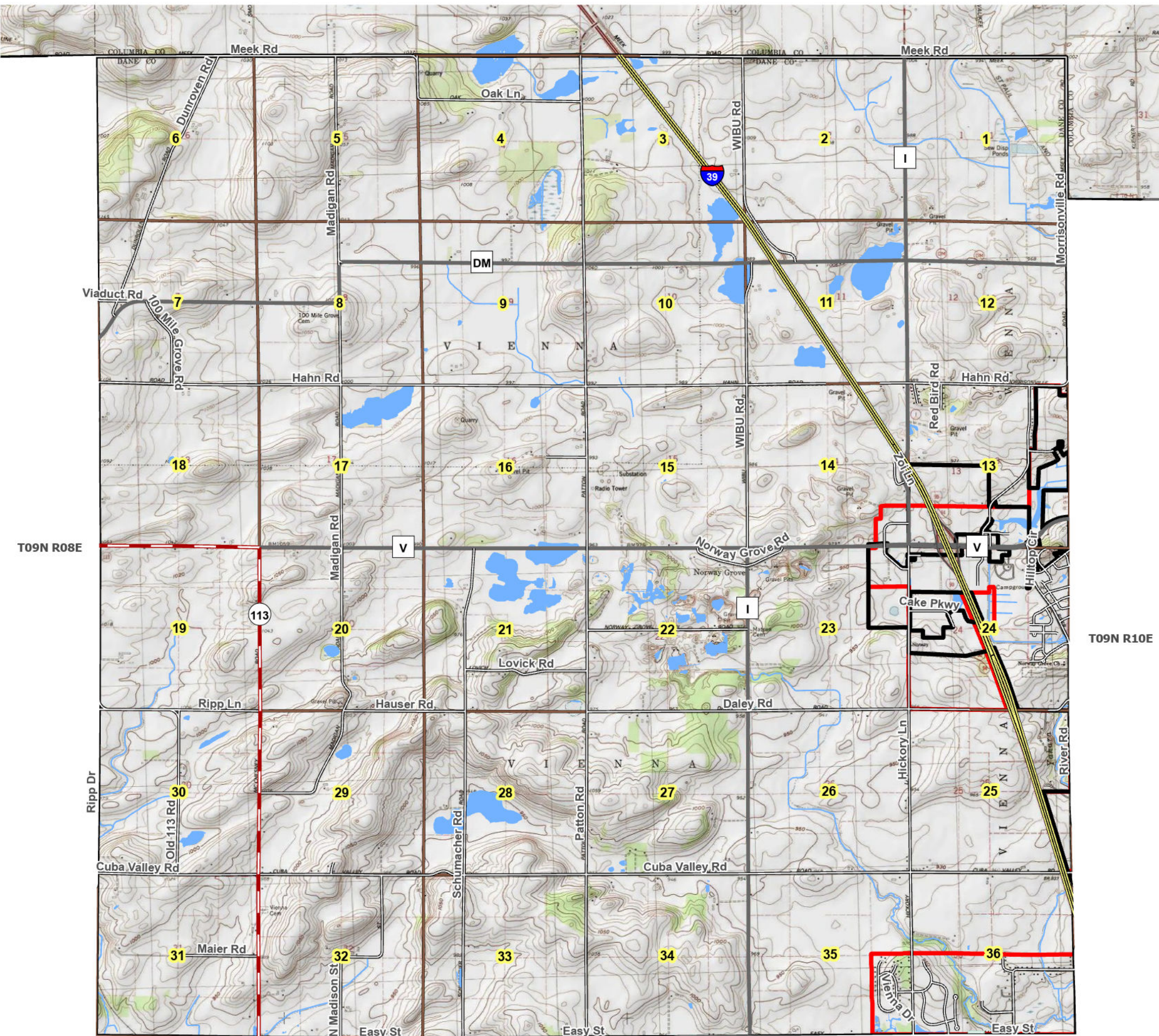
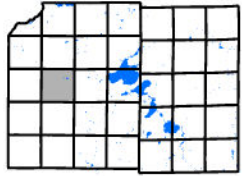


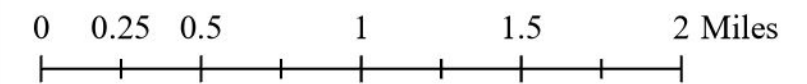
Town of Cross Plains

USGS Topo Quad



-  Municipal Boundary
-  Service Area

September, 2022



Source Info:
 Village Boundary: 2022 (DCPD)
 Service Areas: 2022, (CARPC)

This map was prepared through the Dane County Department of Planning and Development in conjunction with the Dane County Land & Water Resources Department, Dane County Land Information Office and the Capital Area Regional Planning Commission

Copyright: © 2013 National Geographic Society, i-cubed

T08N R08E

T08N R09E

I