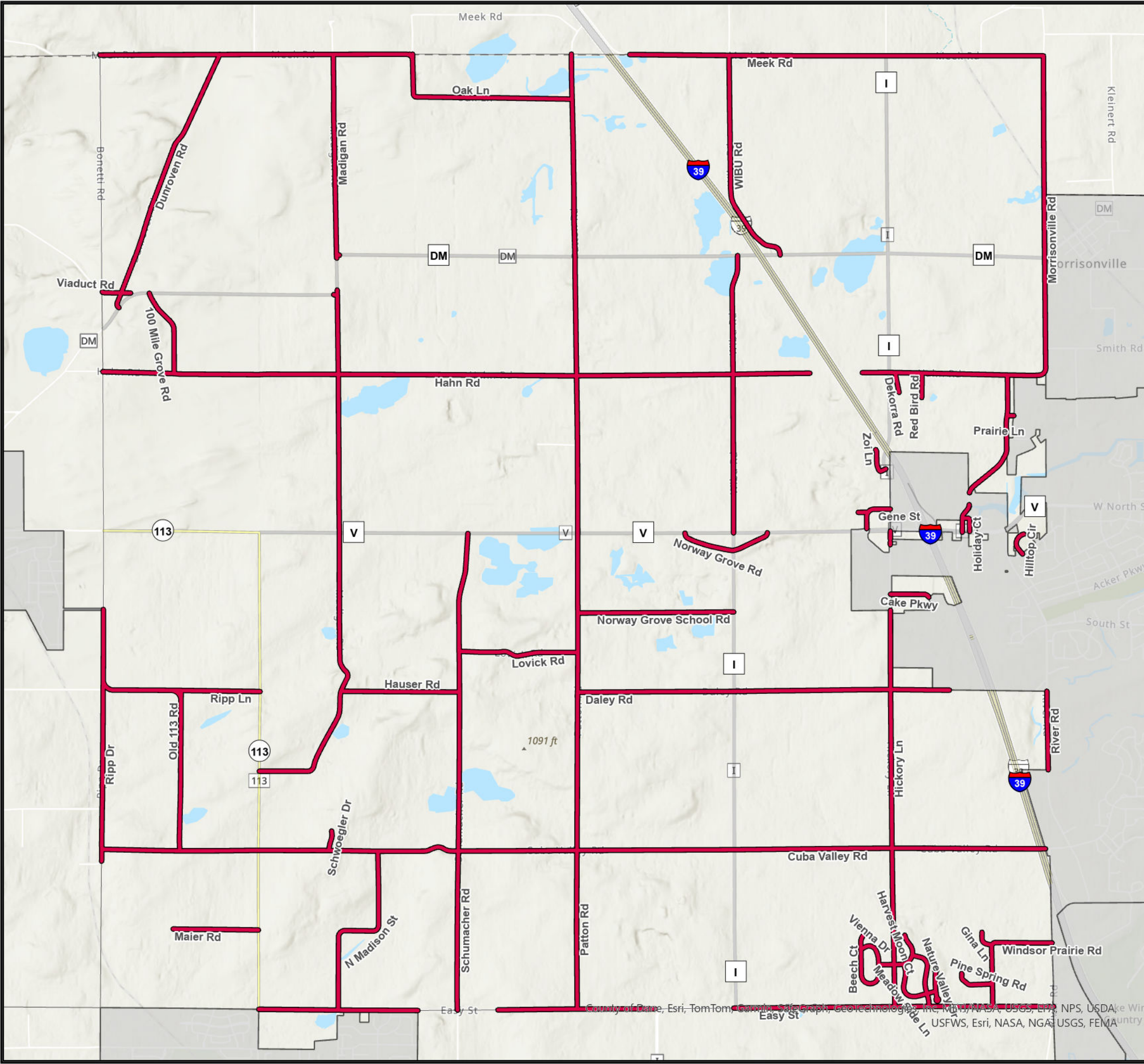


# Town of Vienna

## Roads Available for ATV use



### Designated Routes

All Town of Vienna are designated ATV/UTV routes unless otherwise posted. Border roads are only open on the Town side, for example the South side of Meek Road.

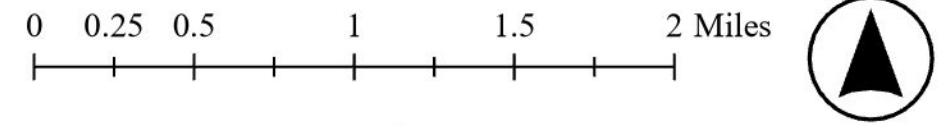
Under the direction of the Town, all ATV /UTV route signs will be posted by the appropriate local club. This includes installation of signage as well as the ongoing maintenance of signs.

### Section 6- Operation of ATV's and UTV's

- A. All ATV and UTV operators shall operate under 45 miles per hour unless a reduced speed is otherwise required by law.
  - B. The operation of ATV's and UTV's is restricted to the daily period of 5:00am - 10:00pm
  - C. Operators shall abide by all traffic laws.
  - D. ATV's and UTV's must operate with fully functional headlights, taillights, and brake lights. Lights must be on at all times.
  - E. ATV operators and passengers under the age of 18 must wear a minimum DOT standard ATV or motorcycle helmet with chin strap properly fastened as required by Wis. Stat. Sec. 23.33.
  - F. UTV operators and passengers must wear seat belts at all times, and if under the age of 18, operators and passengers must also wear a helmet.
  - G. ATV/UTV must be manufactured as a multiple passenger machine to be legal for passengers.
  - H. The ATV/UTV operator shall possess/display an operator's license and safety certificate documents upon demand.
  - I. Liability insurance on all ATV/UTV equipment is required and riders must show such proof if requested by law enforcement.
  - J. No open intoxicants while riding.
  - K. Group rides shall be single file on the right-hand side of the road.
- Section 7 - Enforcement may be done by any law enforcement officer.  
 Section 8 - Penalties - please see Wis. Stat. Sec. 23.33(13)(a)  
 Section 9 - Effective Date 4/16/2024 ordinance may be changed, modified or revoked by the Town at any time.

This is for informational purposes only.  
 See the Town of Vienna for the adopted, legal and exact Ordinance Language.

November, 2024



Source Info:  
 Village Boundary: 2022, (DCPD)  
 Land Use: 2020, (CARPC)  
 Service Areas: 2022, (CARPC)

This map was prepared through the Dane County Department of Planning and Development in conjunction with the Dane County Land & Water Resources Department, Dane County Land Information Office and the Capital Area Regional Planning Commission