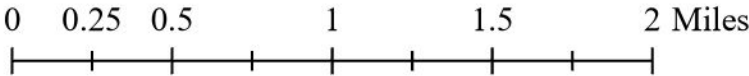


2024 Aerial Photograph

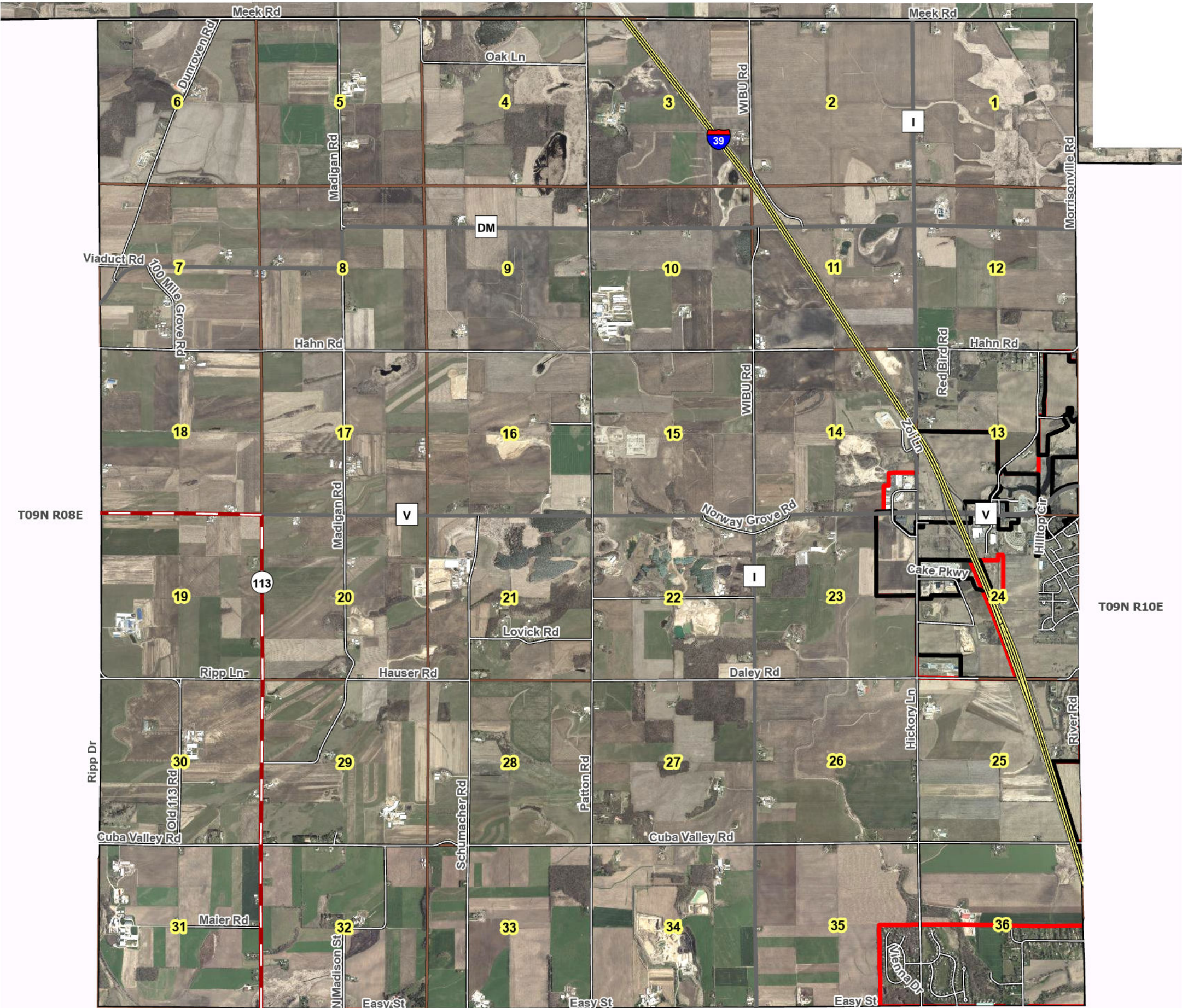
- Municipal Boundary
- Service Area
- Sections

1/10/2025 9:47 AM



Source Info:  
Aerial Photograph: 2024, (FSA/LWRD)  
Village Boundary: 2024, (DCPD)  
Service Areas: 2024, (CARPC)

This map was prepared through the Dane County Department of Planning and Development in conjunction with the Dane County Land & Water Resources Department, Dane County Land Information Office and the Capital Area Regional Planning Commission



T09N R08E

T09N R10E

T08N R08E

T08N R09E

I