

Town of Mazomanie

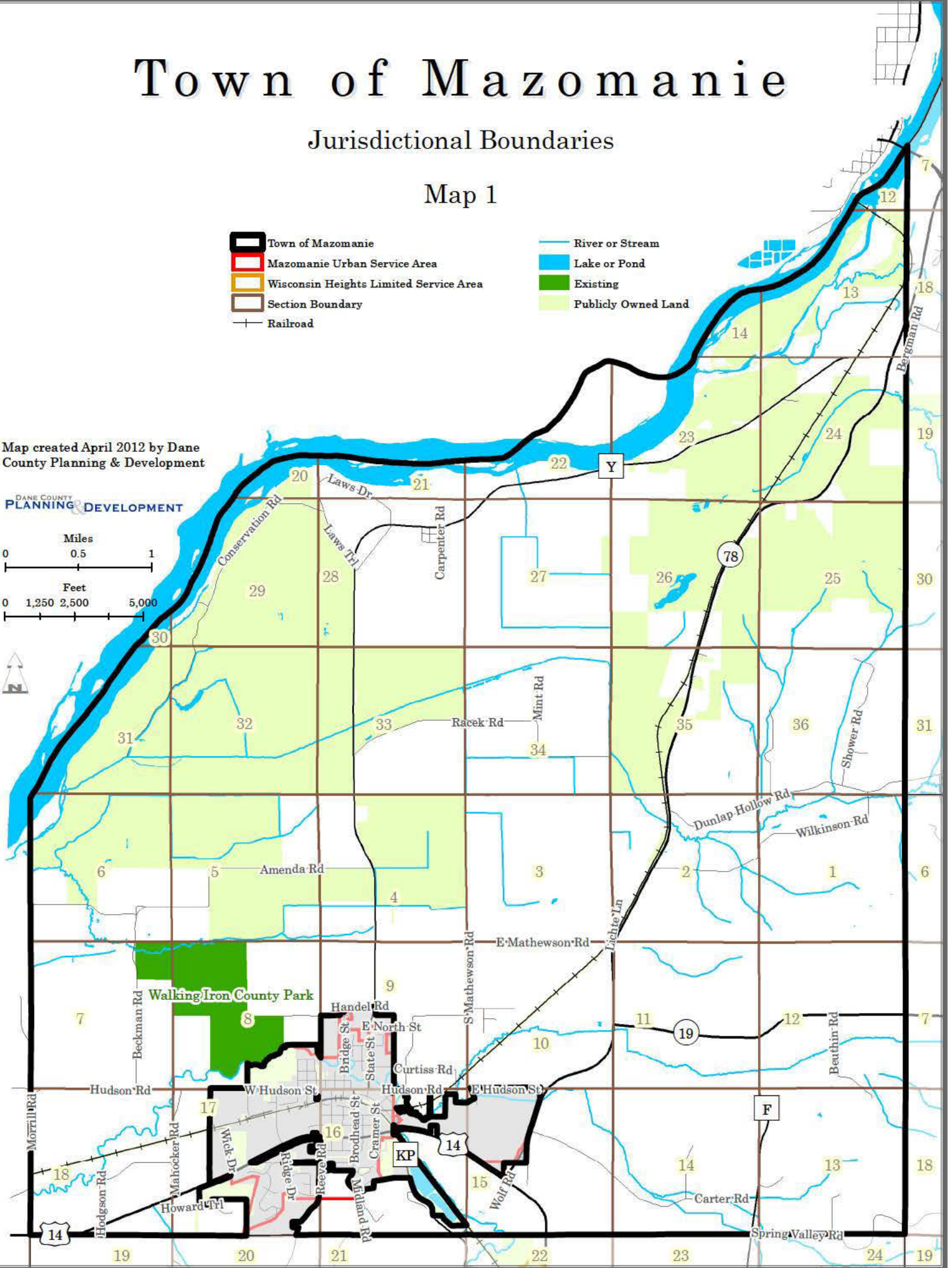
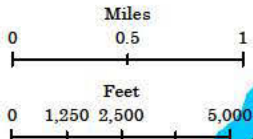
Jurisdictional Boundaries

Map 1

- Town of Mazomanie
- Mazomanie Urban Service Area
- Wisconsin Heights Limited Service Area
- Section Boundary
- Railroad
- River or Stream
- Lake or Pond
- Existing
- Publicly Owned Land

Map created April 2012 by Dane County Planning & Development

DANE COUNTY
PLANNING & DEVELOPMENT



Town of Mazomanie

Soil Suitability

Map 2

- Town of Mazomanie
- Section Boundary
- Railroad
- Subwatersheds (Hydrologic Units)
- River or Stream

- Wetlands > 2 acres
- Wetlands < 2 acres
- Dammed Pond
- Excavated Pond
- Lake or Pond

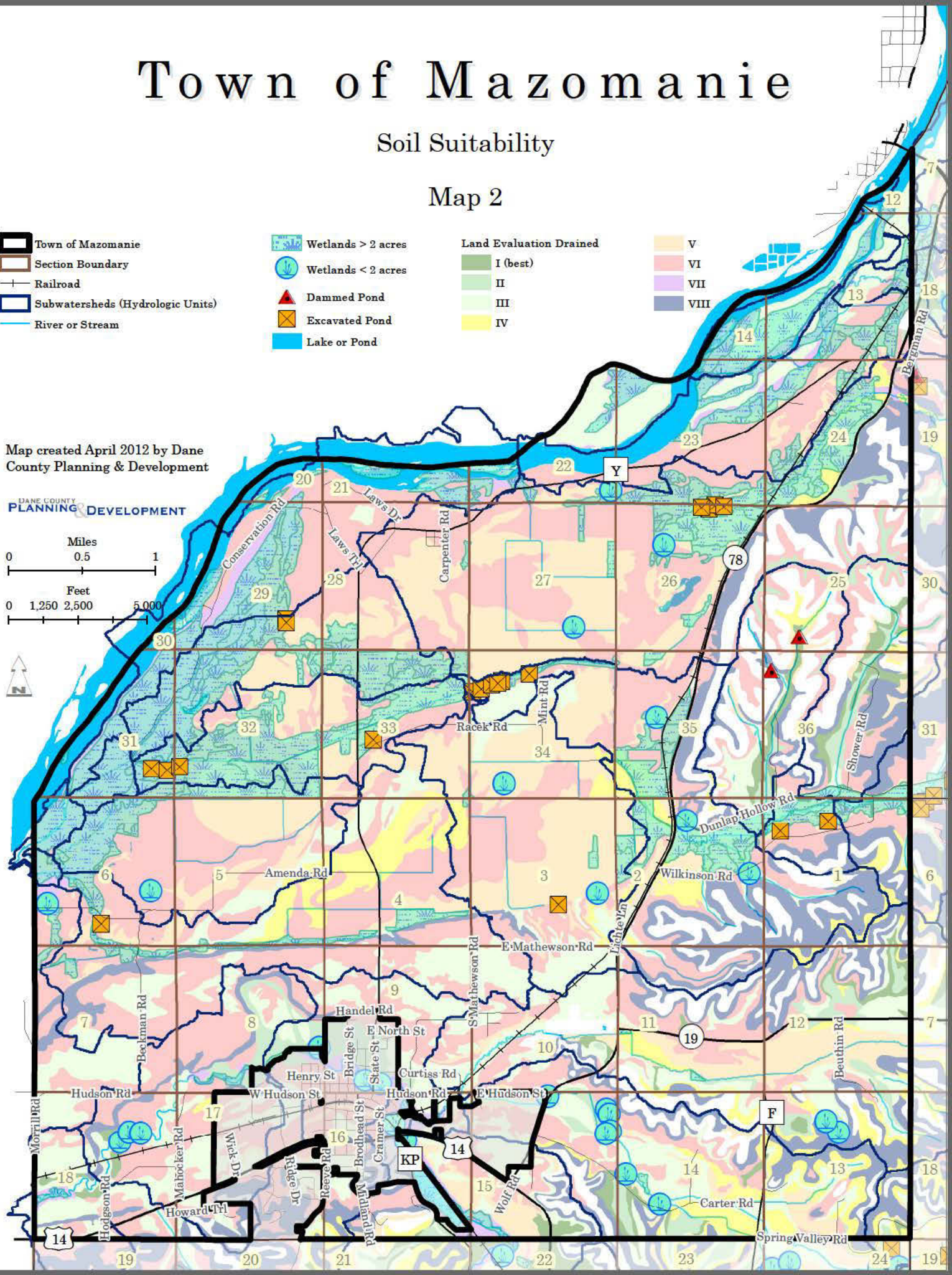
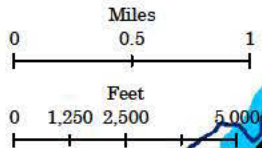
Land Evaluation Drained

- I (best)
- II
- III
- IV

- V
- VI
- VII
- VIII

Map created April 2012 by Dane County Planning & Development

DANE COUNTY
PLANNING & DEVELOPMENT



Town of Mazomanie

Environmentally Sensitive Areas and Public lands

Map 3

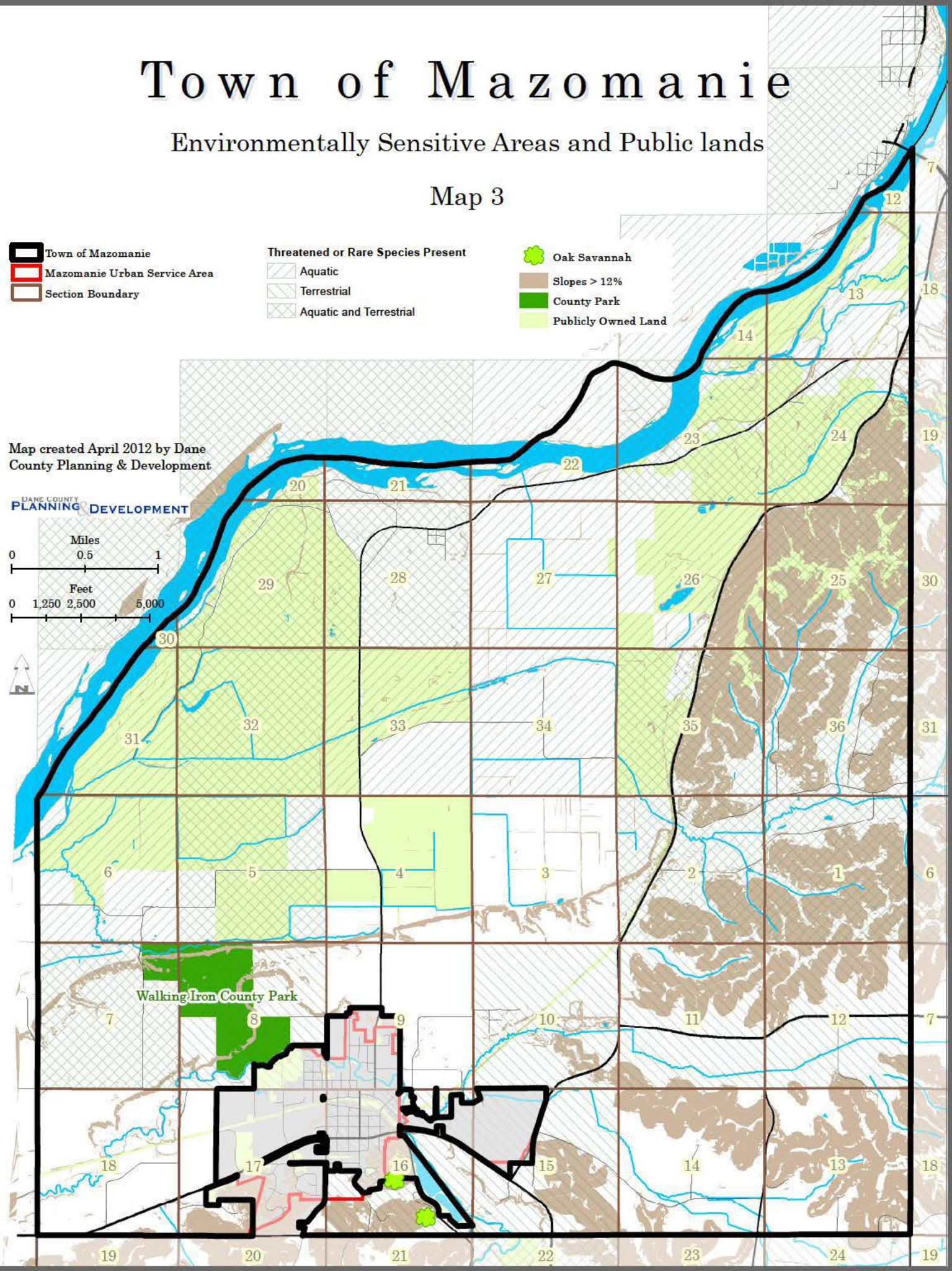
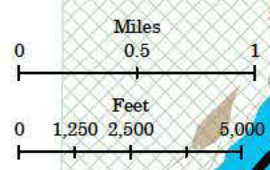
- Town of Mazomanie
- Mazomanie Urban Service Area
- Section Boundary

- Threatened or Rare Species Present**
 - Aquatic
 - Terrestrial
 - Aquatic and Terrestrial

- Oak Savannah
- Slopes > 12%
- County Park
- Publicly Owned Land

Map created April 2012 by Dane County Planning & Development

DANE COUNTY
PLANNING & DEVELOPMENT



Town of Mazomanie

2010 Land Use

Map 4

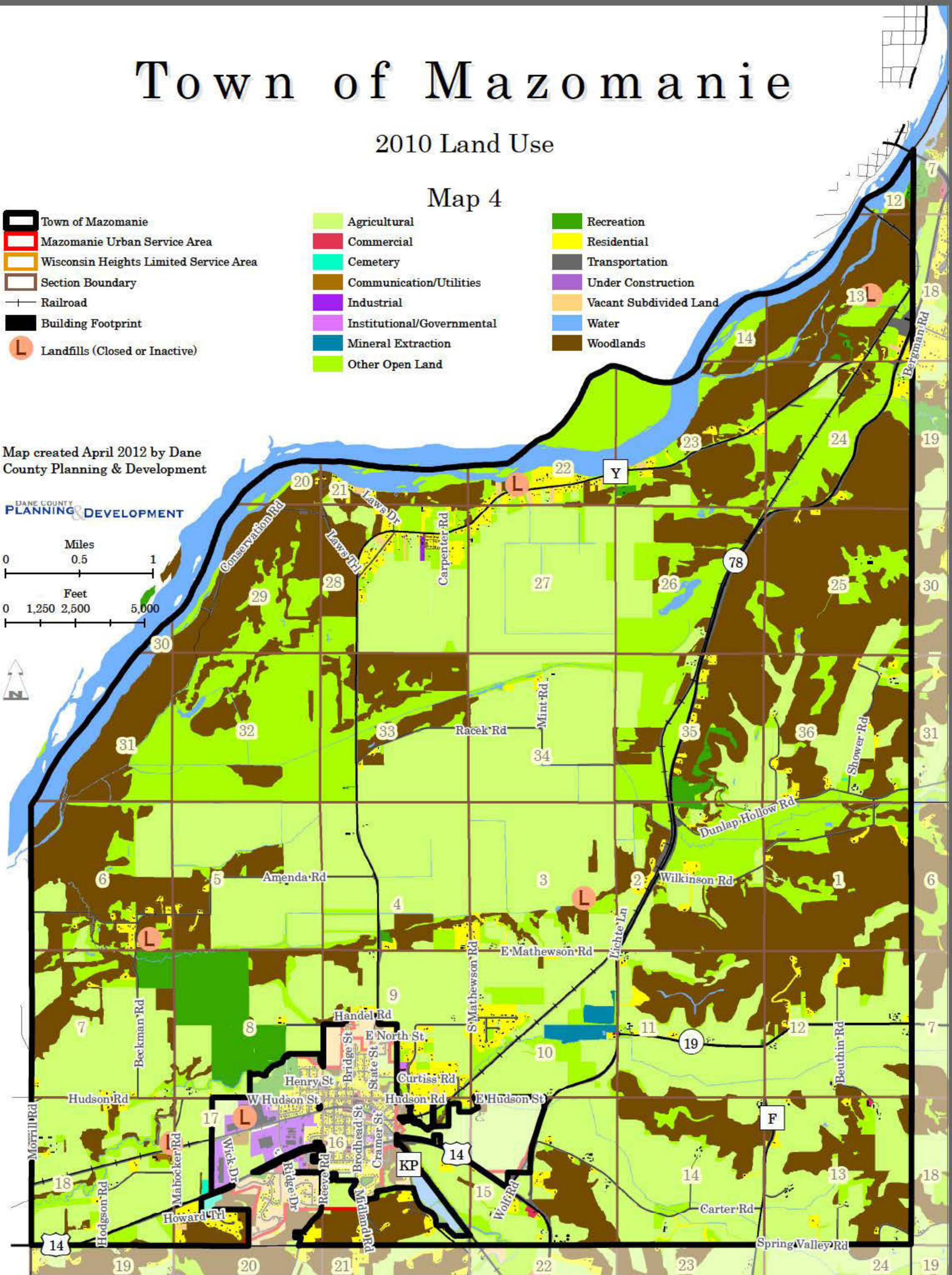
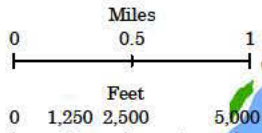
- Town of Mazomanie
- Mazomanie Urban Service Area
- Wisconsin Heights Limited Service Area
- Section Boundary
- Railroad
- Building Footprint
- Landfills (Closed or Inactive)

- Agricultural
- Commercial
- Cemetery
- Communication/Utilities
- Industrial
- Institutional/Governmental
- Mineral Extraction
- Other Open Land

- Recreation
- Residential
- Transportation
- Under Construction
- Vacant Subdivided Land
- Water
- Woodlands

Map created April 2012 by Dane County Planning & Development

DANE COUNTY
PLANNING & DEVELOPMENT


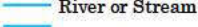



Town of Mazomanie

Suitability for On-site Wastewater Disposal Systems

Map 5

-  Town of Mazomanie
-  Mazomanie Urban Service Area
-  Wisconsin Heights Limited Service Area
-  Section Boundary

-  Railroad
-  River or Stream
-  Lake or Pond

- Building Site Potential from Soils
for Dwellings with Basements**
-  Very Limited
 -  Somewhat Limited
 -  Not Limited

Map created April 2012 by Dane County Planning & Development

DANE COUNTY
PLANNING & DEVELOPMENT

