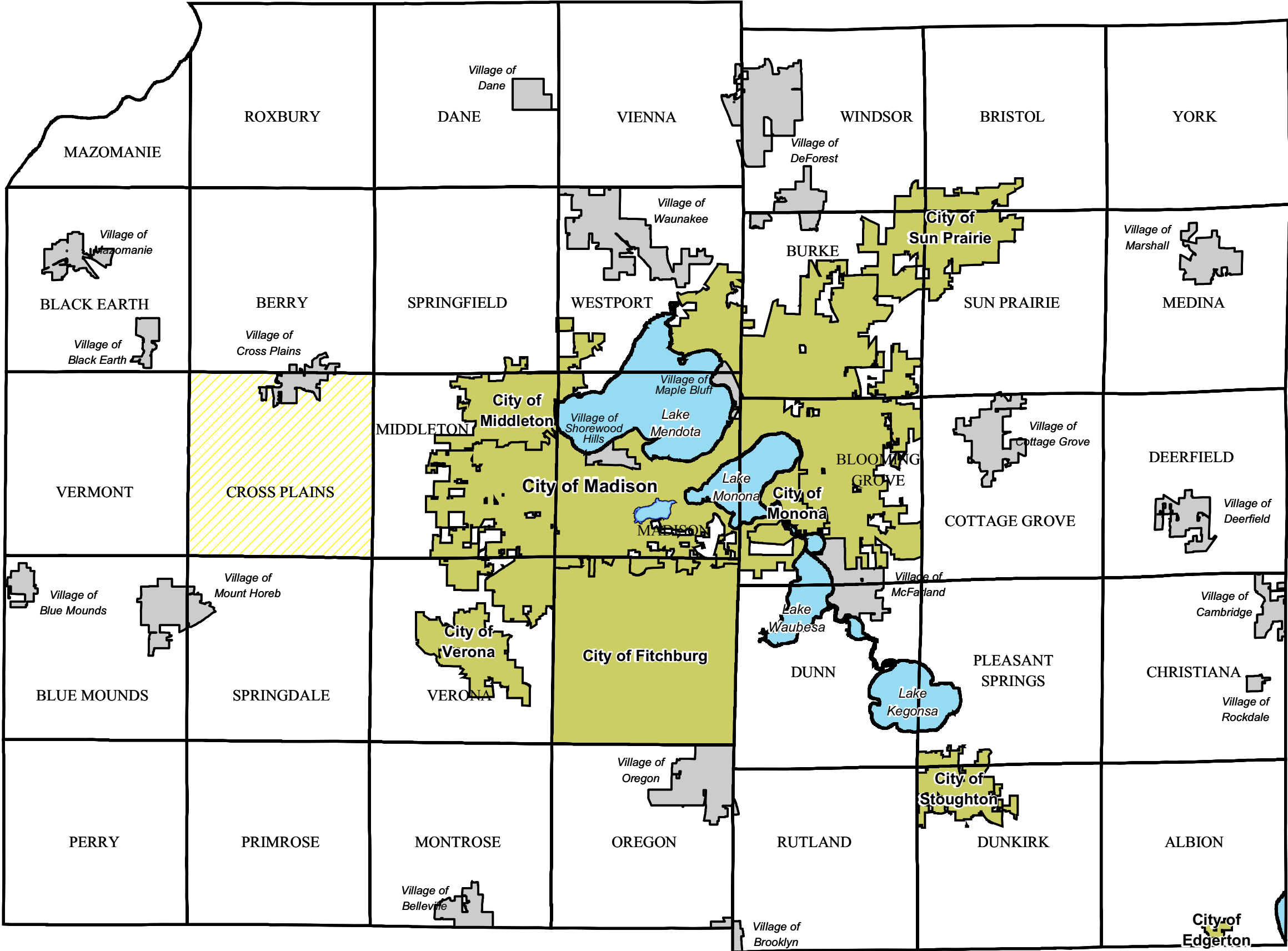
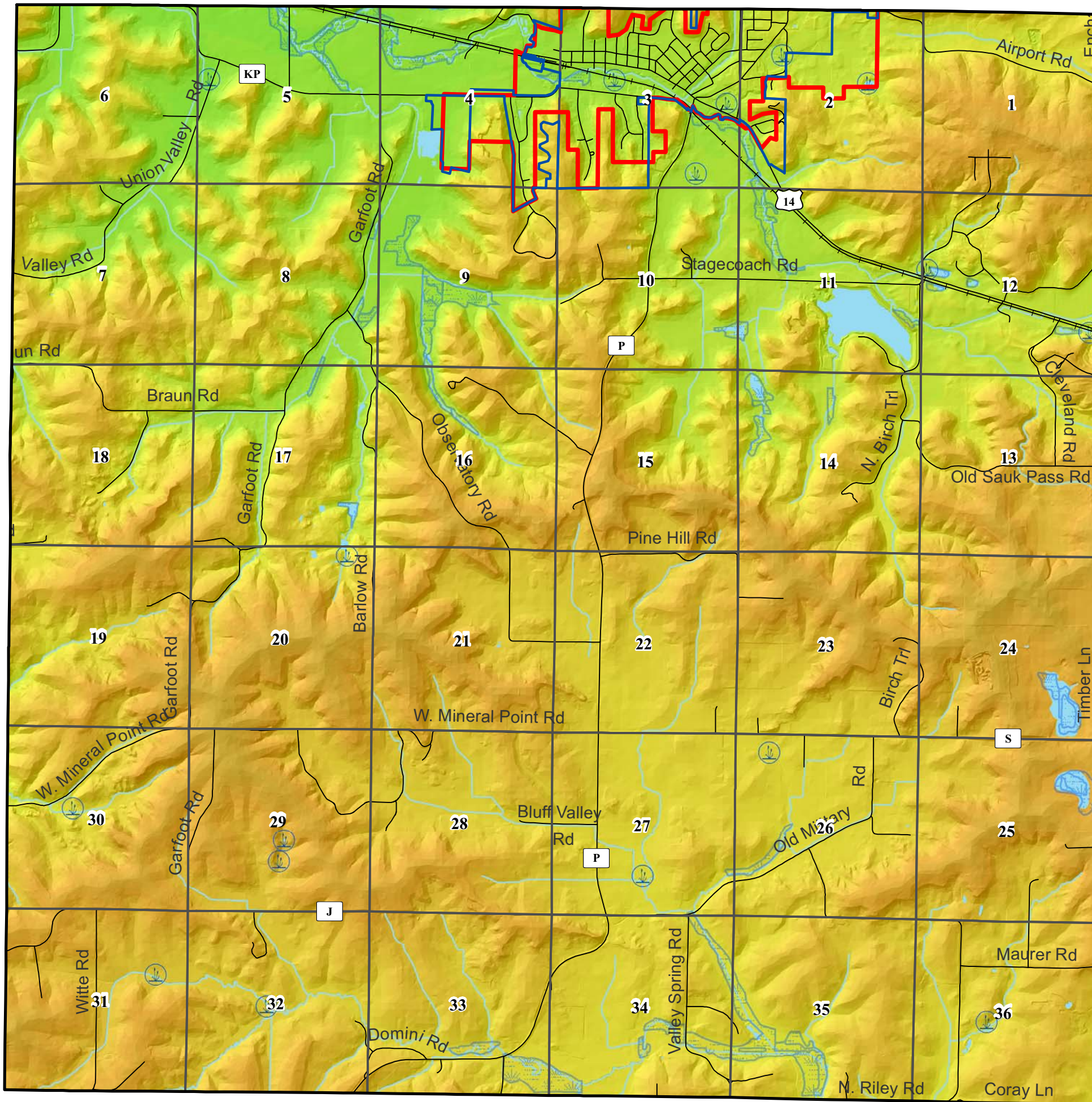


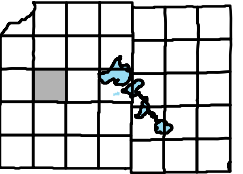
Location

Map 1-1



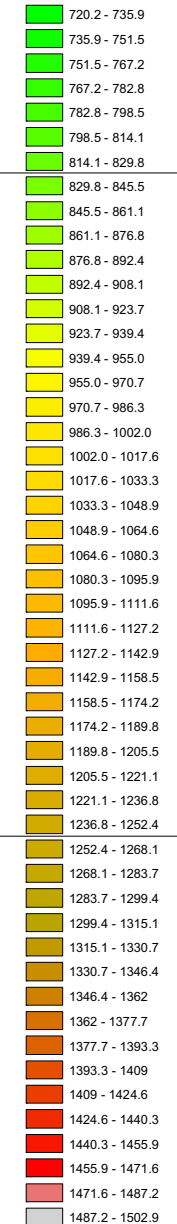


Town of Cross Plains Comprehensive Plan



Map 1-2 Elevation

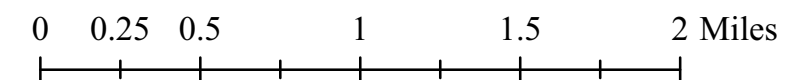
Dane County Elevation Range (msl)



Town of Cross Plains Elevation

- Wetlands < 2 acres
- Wetlands > 2 acres
- Railroad
- Section Boundary
- Cross Plains Urban Service Area
- Village of Cross Plains

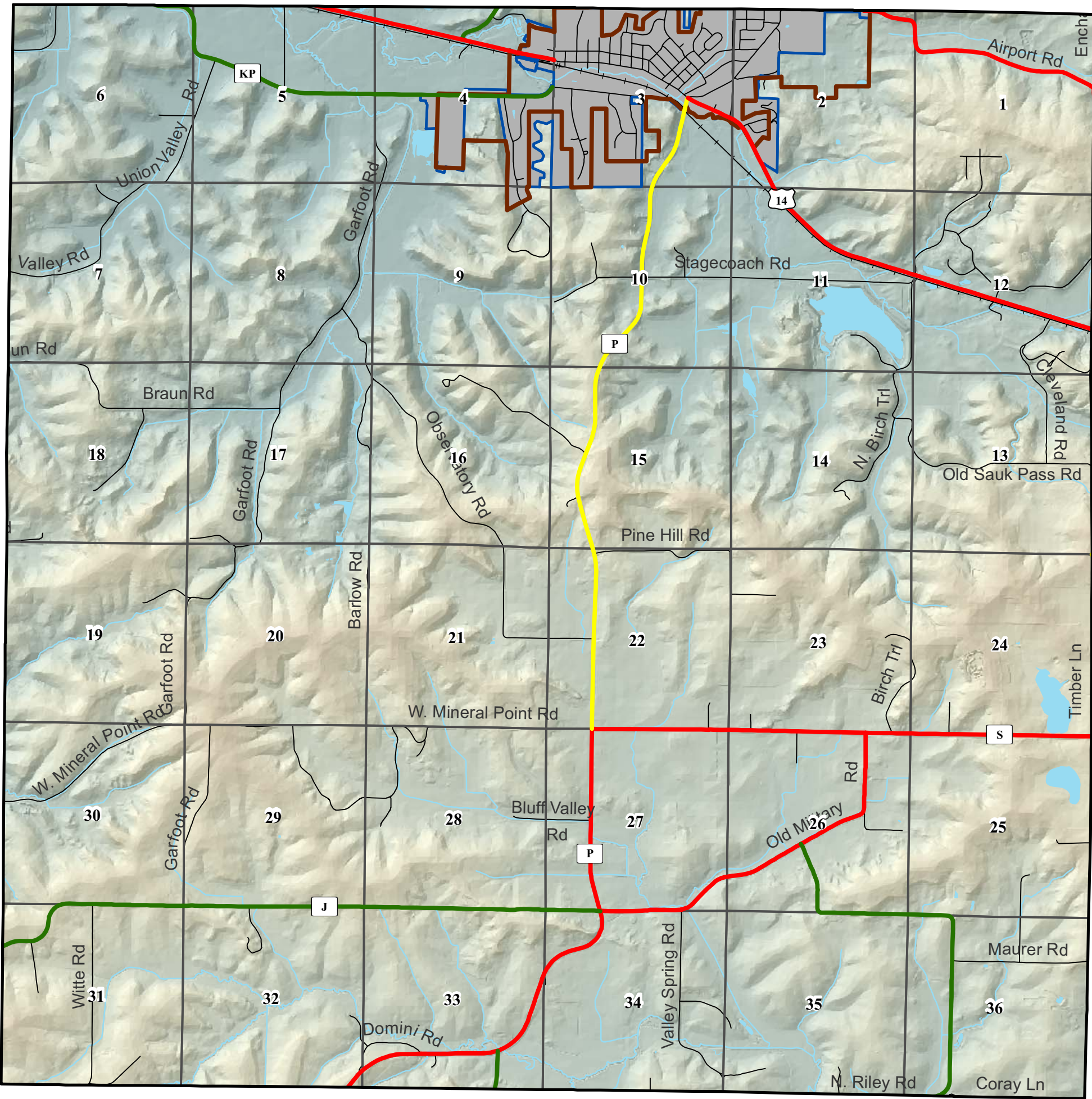
Sept. 8th 2009



Source Info:
Cross Plains Village Boundary: 08/2009, (DCPD)
Elevation: DEM 2005, (DCLIO)
Service Areas: 08/2009, (CARPC)

DANE COUNTY
PLANNING & DEVELOPMENT

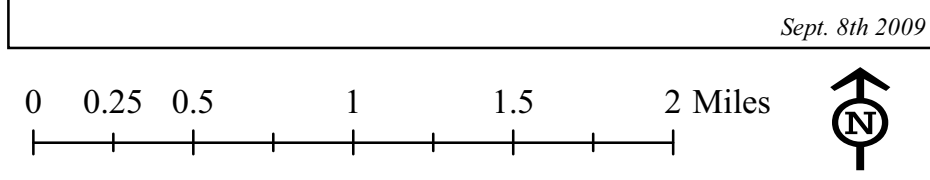
This map was prepared through the Dane County Department of Planning and Development in conjunction with the Dane County Land & Water Resources Department, Dane County Land Information Office and the Capital Area Regional Planning Commission.



Town of Cross Plains Comprehensive Plan

Map 3-1 Bicycle/Shoulder & Traffic Evaluation

- Bicycle/Non-Motorized Vehicle Use**
- Most Suitable
 - May Be Suitable
 - Least Suitable
 - Bicycles Prohibited
 - Railroad
 - Section Boundary
 - Cross Plains Urban Service Area
 - Village of Cross Plains

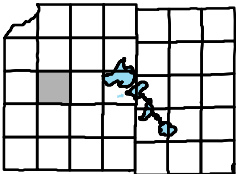


Source Info:
Cross Plains Village Boundary: 08/2009 (DCPD)
Road Network: 2005, (DCLIO)
Service Areas: 08/2009 (CARPC)
Trails: 05/02 (DCRPC)

**DANE COUNTY
PLANNING & DEVELOPMENT**

This map was prepared through the Dane County Department of Planning and Development in conjunction with the Dane County Land & Water Resources Department, Dane County Land Information Office and the Capital Area Regional Planning Commission.

Town of Cross Plains Comprehensive Plan



Map 4-1 Building Site Potential

Soil Potential Rating for Dwellings with Basements

- Very high
- High
- Medium
- Low
- Very low

- Railroad
- Section Boundary
- Cross Plains Urban Service Area
- Village of Cross Plains

Soil Potential Ratings are based on Natural Resources Conservation Service (NRCS) data. The purpose of the ratings is to identify the relative suitability of soils for a particular use considering economic, social, and environmental values.

Contact The Dane County Land and Water Resources Department for further details.

Sept. 8th 2009

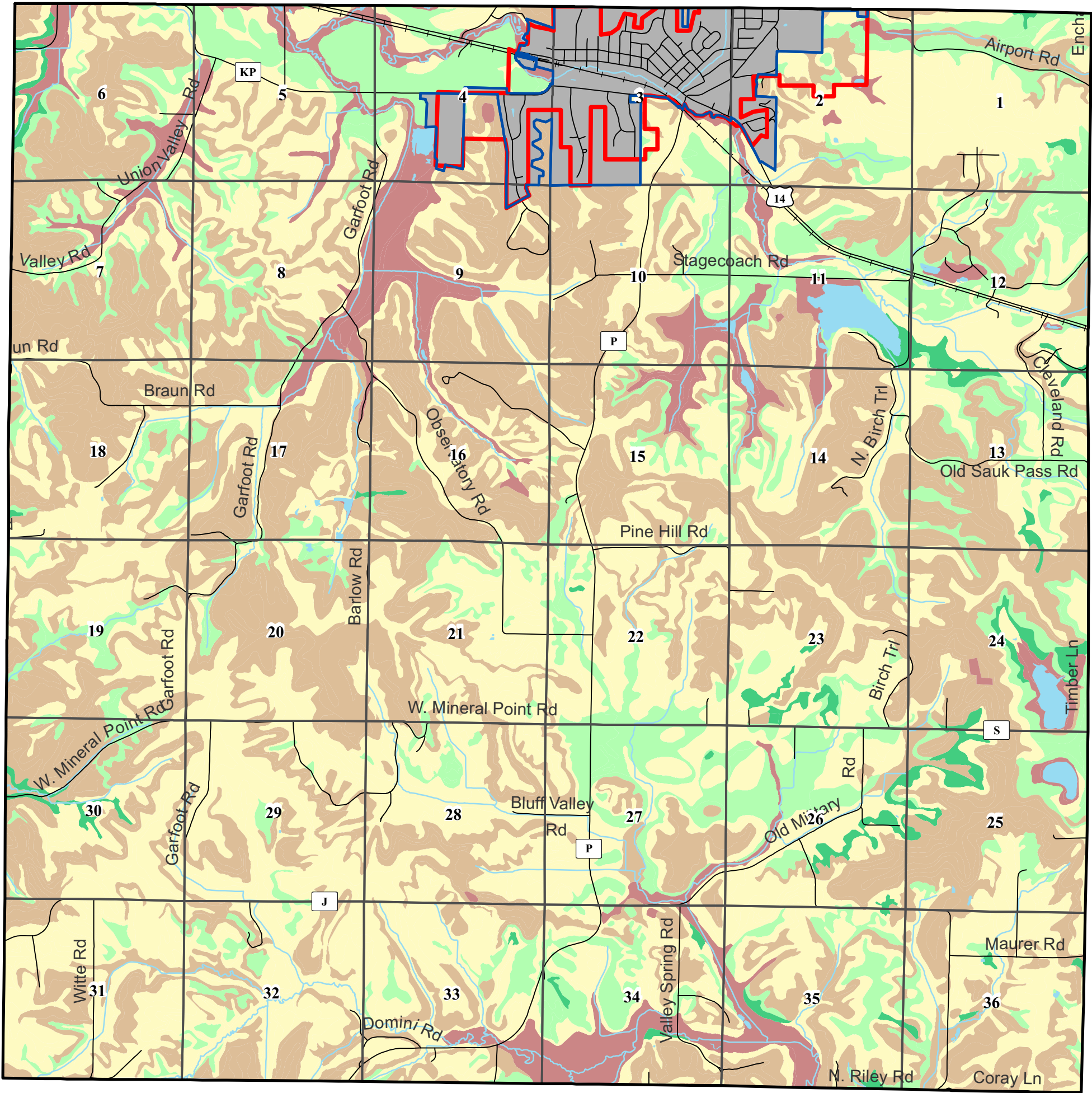
0 0.25 0.5 1 1.5 2 Miles



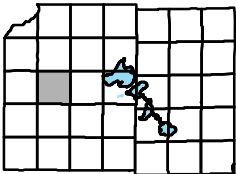
Source Info:
Cross Plains Village Boundary: 08/2009, (DCPD)
Service Areas: 08/2009, (CARPC)
Soils: 2000, (DCLIO)

DANE COUNTY
PLANNING & DEVELOPMENT

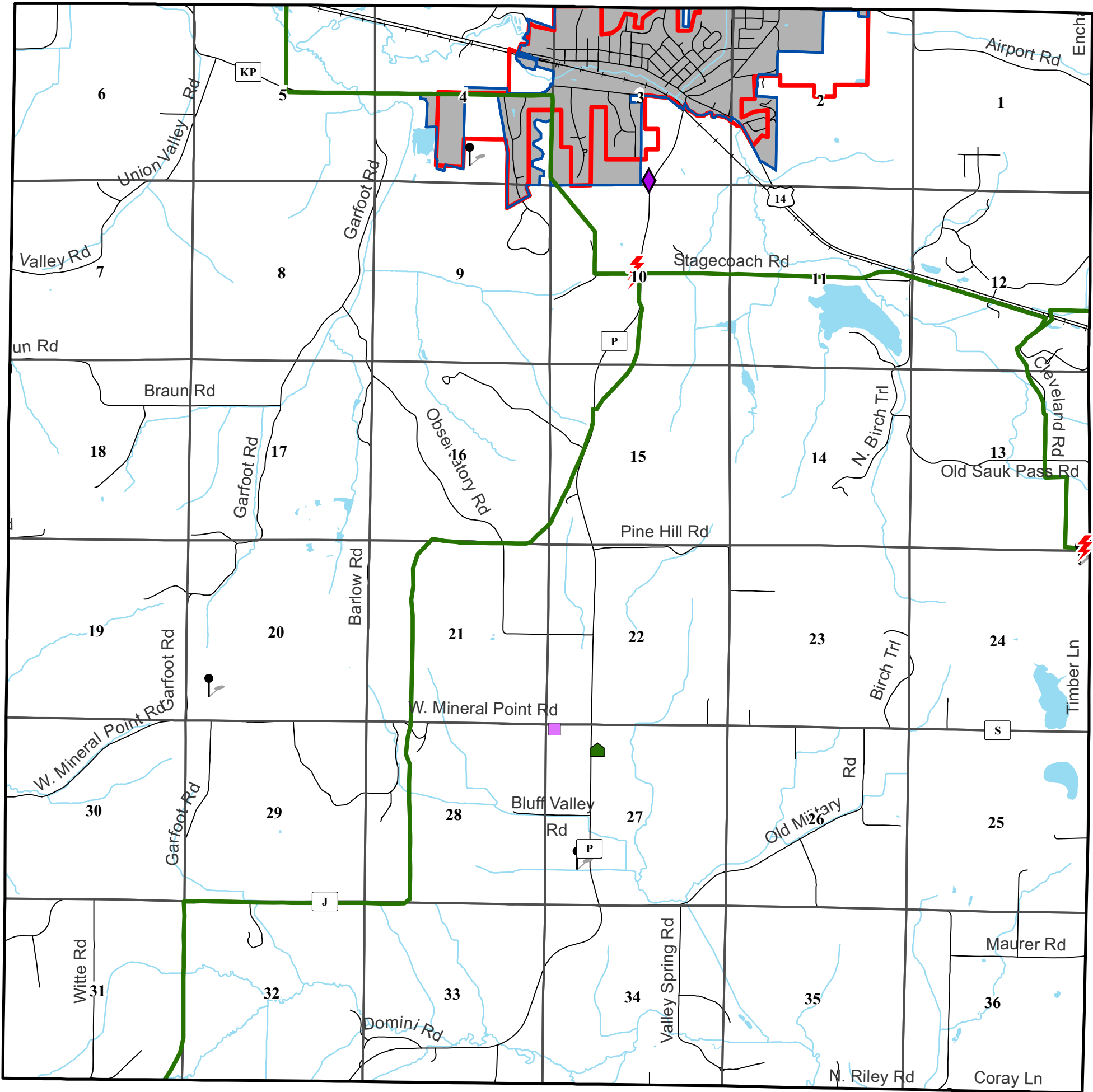
This map was prepared through the Dane County Department of Planning and Development in conjunction with the Dane County Land & Water Resources Department, Dane County Land Information Office and the Capital Area Regional Planning Commission.



Town of Cross Plains Comprehensive Plan



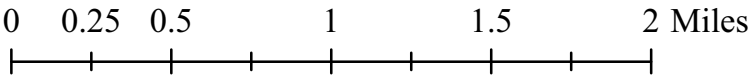
Map 4-2 Utilities & Infrastructure



- Telecommunication Tower
- Town Hall
- Town Garage
- County Yard
- Electrical Substation
- Electrical Transmission Line
- Section Boundary
- Cross Plains Urban Service Area
- Village of Cross Plains

All transmission lines in the Town of Cross Plains are 138 volt lines.

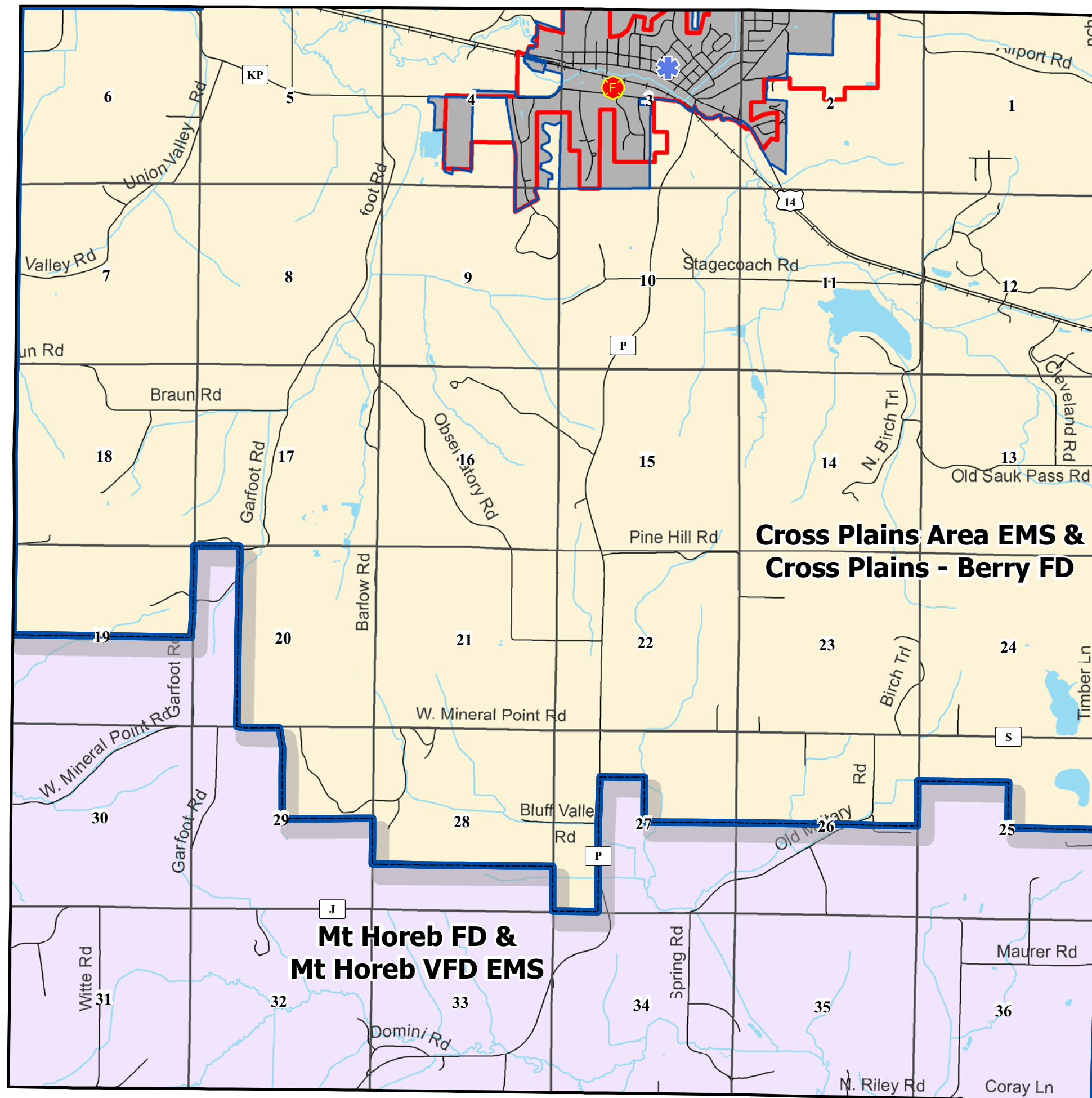
Sept. 8th 2009



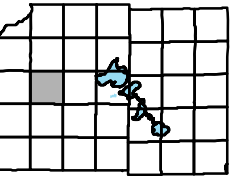
Source Info:
Cross Plains Village Boundary: 08/09, (DCPD)
Electrical Substation: 2005, (DCPD)
Railroad: 2000, (DCRPC)
Service Areas: 08/09, (DCPD)
Towers: 2006, (DCPD)
Town Garage or Hall: 2006, (DCPD)

DANE COUNTY
PLANNING & DEVELOPMENT

This map was prepared through the Dane County Department of Planning and Development in conjunction with the Dane County Land & Water Resources Department, Dane County Land Information Office and the Capital Area Regional Planning Commission.



Town of Cross Plains Comprehensive Plan



Map 4-3 EMS, Fire District and Sheriff Precinct

- EMS Stations
- Fire Stations
- Railroad
- Section Boundary
- Cross Plains Urban Service Area
- Village of Cross Plains

The entire Town of Cross Plains is within the W3 (Whiskey 3) Sheriff Precinct.

Sept. 8th 2009

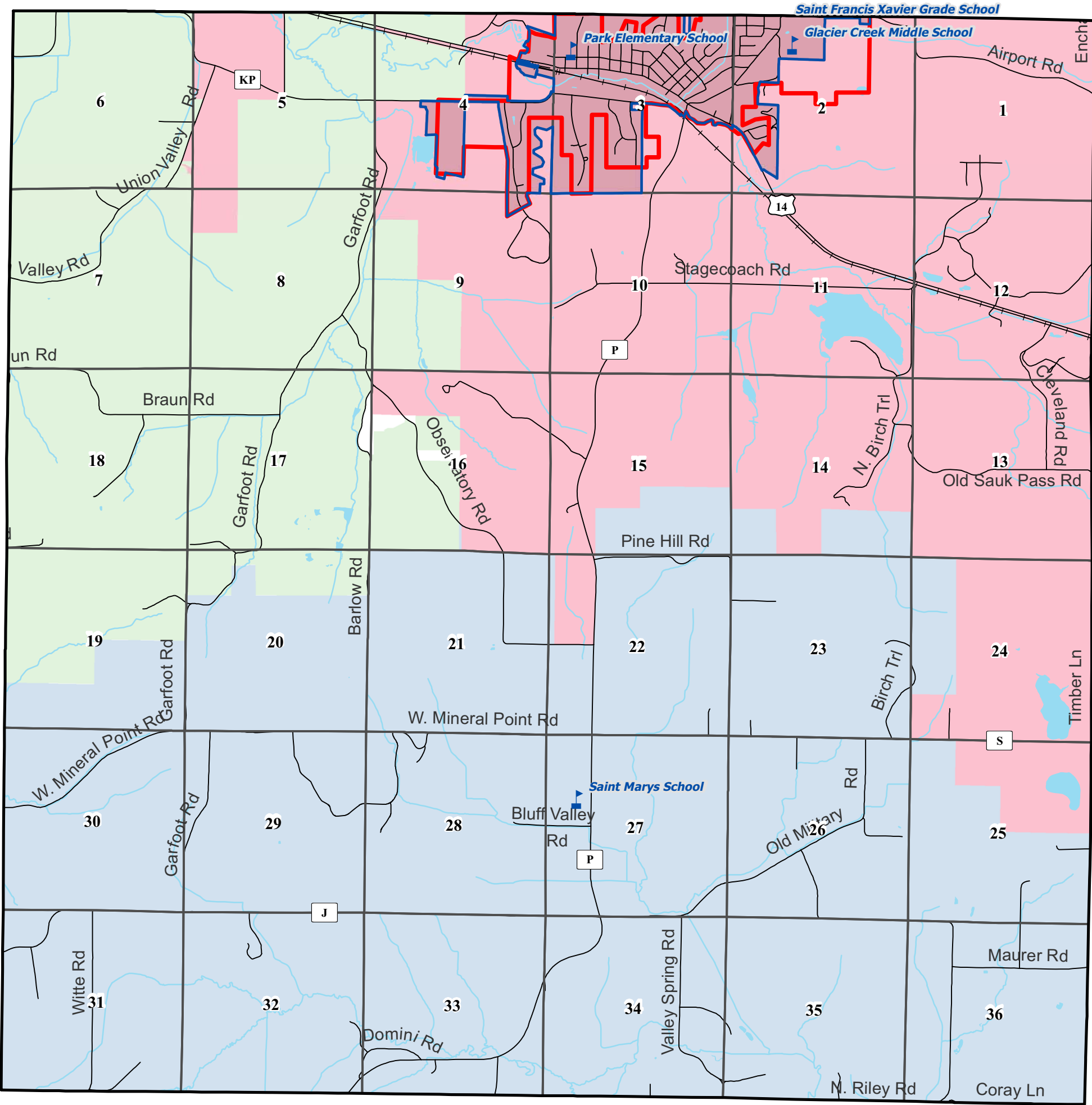
Source Info:
 Cross Plains Village Boundary: 08/2009 (DCPD)
 EMS Districts: 2007, (DCLIO)
 Fire Districts: 2007, (DCLIO)
 Service Area: 08/2009, (CARPC)
 Sheriff Districts: 2007, (DCLIO)

DANE COUNTY
PLANNING & DEVELOPMENT

This map was prepared through the Dane County Department of Planning and Development in conjunction with the Dane County Land & Water Resources Department, Dane County Land Information Office and the Capital Area Regional Planning Commission.

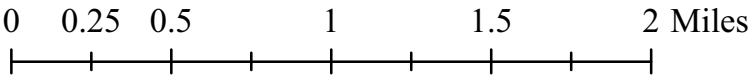
Town of Cross Plains
Comprehensive Plan

Map 4-4 School Districts



- Schools
- School Districts (2009)**
- MIDDLETON-CROSS PLAINS
- MOUNT HOREB
- WISCONSIN HEIGHTS
- Railroad
- Section Boundary
- Cross Plains Urban Service Area
- Village of Cross Plains

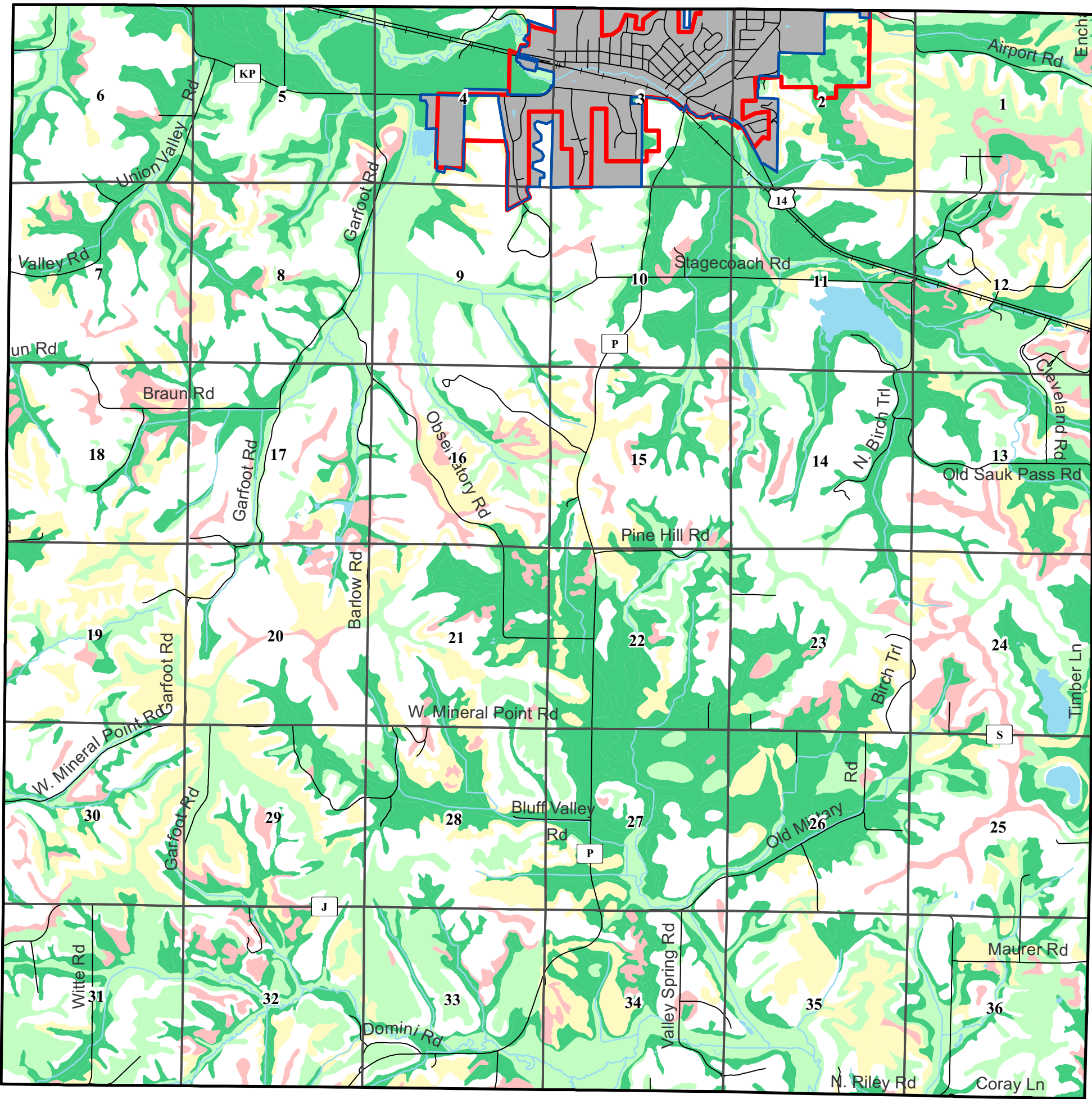
Sept. 8th 2009



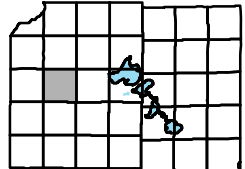
Source Info:
Cross Plains Village Boundary: 08/2009 (DCPD)
School Districts: 2009, Tax Parcels (DCLIO)
Service Areas: 08/2009 (CARPC)

DANE COUNTY
PLANNING & DEVELOPMENT

This map was prepared through the Dane County Department of Planning and Development in conjunction with the Dane County Land & Water Resources Department, Dane County Land Information Office and the Capital Area Regional Planning Commission.



Town of Cross Plains Comprehensive Plan



Map 5-1 Agricultural Land Evaluation

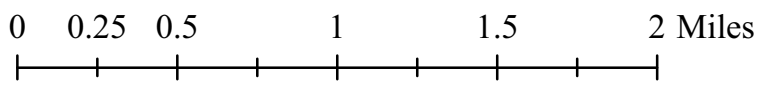
- Agricultural Groups**
- I, II (best soils for agricultural use)
 - III, IV
 - V, VI
 - VII, VIII

- Railroad
- Section Boundary
- Cross Plains Urban Service Area
- Village of Cross Plains

Agricultural Groups are based on the Land Evaluation Site Assessment rating system from Land Evaluation and Site Assessment: A Guidebook for Rating Agricultural Lands, Second Edition, published by the Soil and Water Conservation Society.

Contact The Dane County Land and Water Resources Department for further details.

Sept. 8th 2009

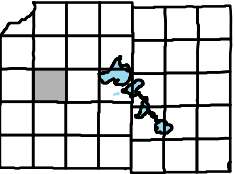


Source Info:
 Cross Plains Village Boundary: 08/2009, (DCPD)
 Service Areas: 08/2009, (CARPC)
 Soils: 2000, (DCLIO)

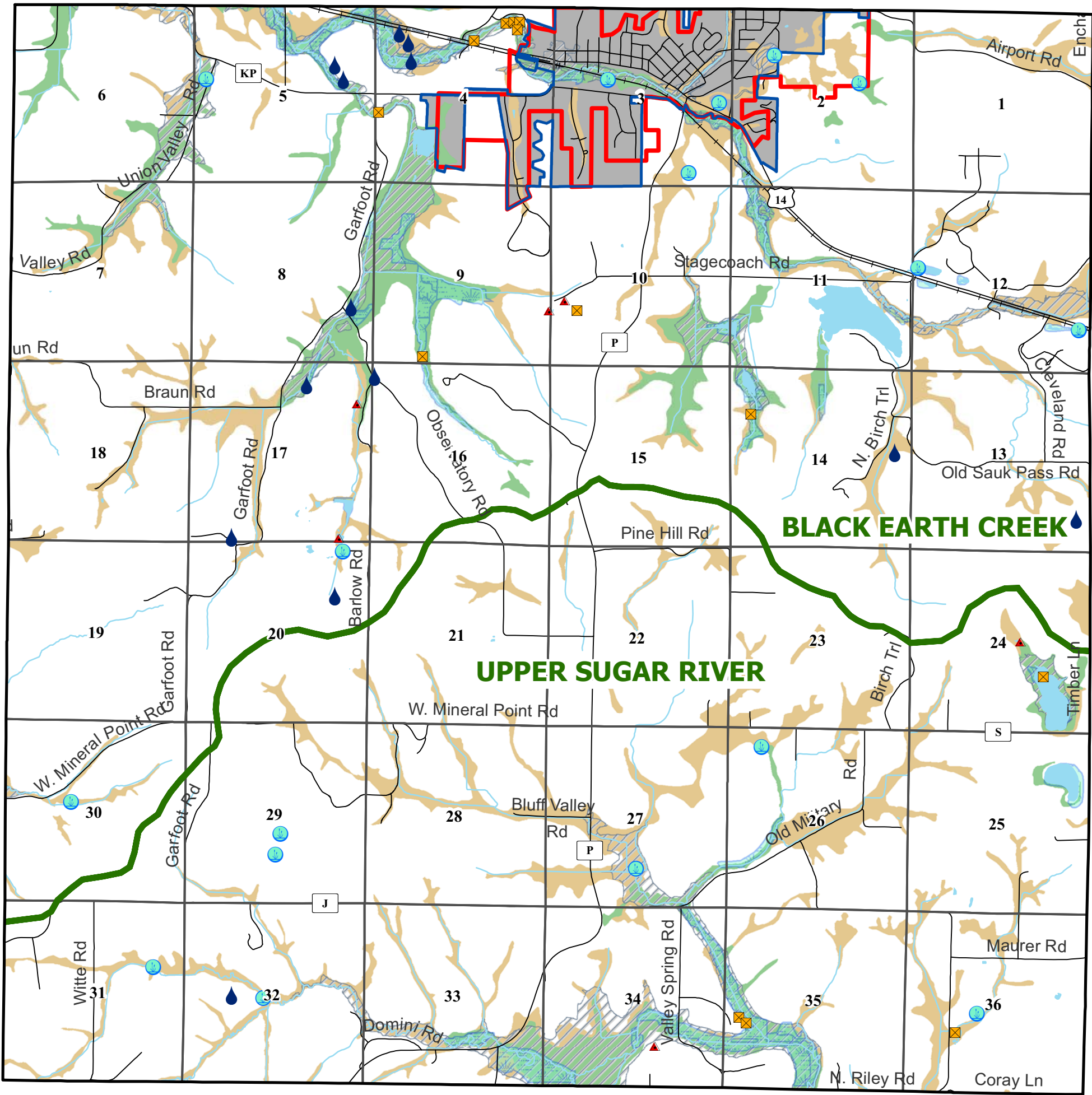


This map was prepared through the Dane County Department of Planning and Development in conjunction with the Dane County Land & Water Resources Department, Dane County Land Information Office and the Capital Area Regional Planning Commission.

Town of Cross Plains Comprehensive Plan



Map 5-2 Water Resources



- Springs
- Wetlands < 2 acres
- Dammed Pond
- Excavated Pond
- Wetlands > 2 acres
- Watershed Boundary
- 100 Yr Floodplain (FEMA 2009)
- Non-hydric soils likely to contain hydric inclusions
- Hydric soils
- Railroad
- Section Boundary
- Cross Plains Urban Service Area
- Village of Cross Plains

The 100 year floodplain is based on a digitization of the National Flood Insurance Program maps. These maps are maintained and updated by The Federal Insurance and Mitigation Administration's Hazard Mapping Division.

Floodplains do not represent only those areas that will flood, rather they are meant to locate potential areas that are susceptible to flooding. For a detailed analysis of floodplains contact the FEMA Hazard Mapping Division at 1-877-FEMA-MAP

For interpretation or regulation of floodplains contact the Dane County Zoning Administrators office at 266-9083

Sept. 8th 2009

0 0.25 0.5 1 1.5 2 Miles

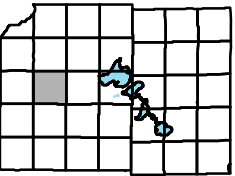


Source Info:
Cross Plains Village Boundary: 08/2009, (DCPD)
Floodplain: 2009, (FEMA)
Hydrography: 2005, (WIDNR)
Service Areas: 08/2009, (CARPC)
Springs: 1998 (CARPC)
Watershed Boundaries: 2005, (DCLIO)
Wetlands: 2000, (WIDNR)

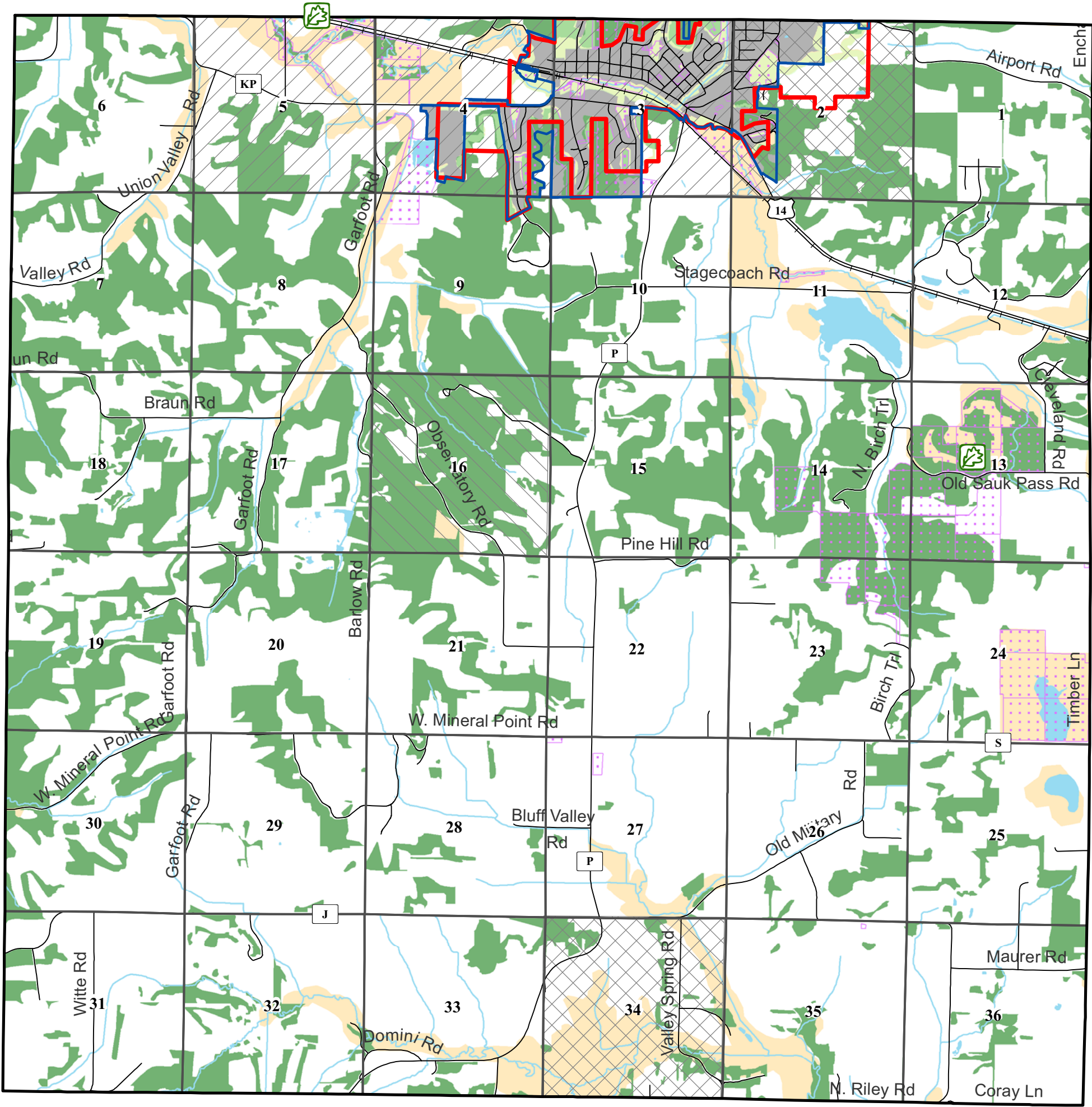
DANE COUNTY
PLANNING & DEVELOPMENT

This map was prepared through the Dane County Department of Planning and Development in conjunction with the Dane County Land & Water Resources Department, Dane County Land Information Office and the Capital Area Regional Planning Commission.

Town of Cross Plains Comprehensive Plan

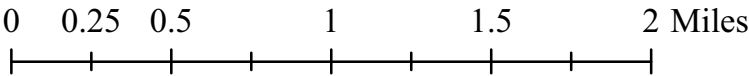


Map 5-3 Environmental Features



- Oak Savanah
- Rare Species**
 - Aquatic
 - Terrestrial
 - Both
- Public Lands
- Environmental Corridors
- Woodlands (80% Canopy)
- Dedicated Open Space
- Railroad
- Section Boundary
- Cross Plains Urban Service Area
- Village of Cross Plains

Sept. 8th 2009



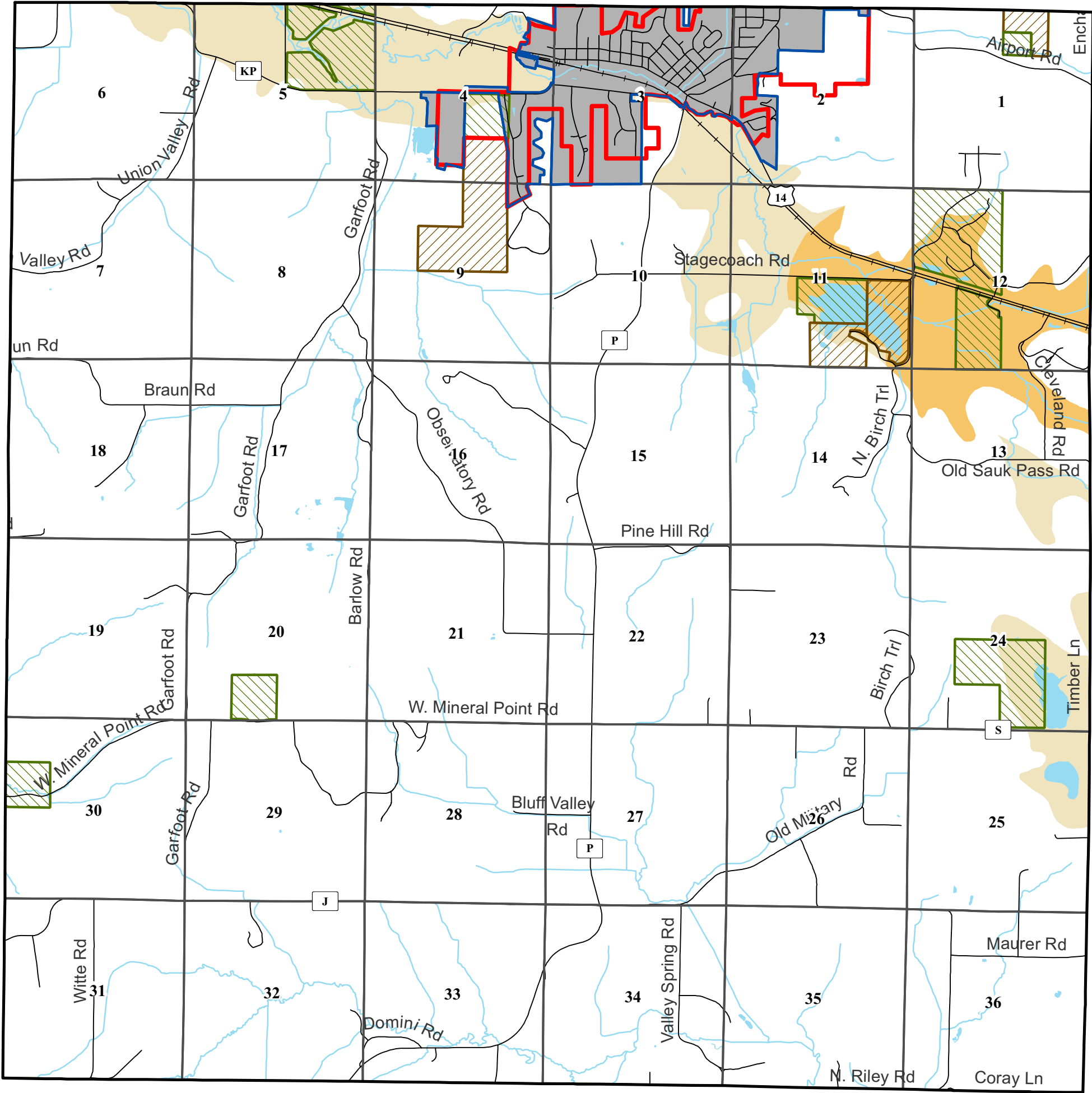
Source Info:
Cross Plains Village Boundary: 08/2009, (DCPD)
Environmental Corridor: 08/2009, (CARPC)
Open Space: 2000, (CARPC)
Rare Species: 2004, (WIDNR)
Service Areas: 08/2009, (CARPC)
Woodland: 2005, (CARPC)

DANE COUNTY
PLANNING & DEVELOPMENT

This map was prepared through the Dane County Department of Planning and Development in conjunction with the Dane County Land & Water Resources Department, Dane County Land Information Office and the Capital Area Regional Planning Commission.

Town of Cross Plains
Comprehensive Plan

Map 5-4 Mineral Extraction



- Conditional Use Permit
- Non-conforming
- High Potential
- Low Potential
- Railroad
- Section Boundary
- Cross Plains Urban Service Area
- Village of Cross Plains

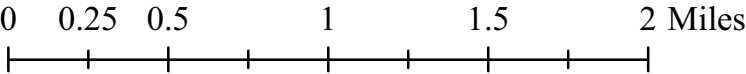
Non-Conforming - Mineral extraction operations which existed prior to 1969 and were registered with and approved by the Dane County Zoning Administrator shall be considered non-conforming uses.

High Potential: This is land that has deposits of either ice contact stratified material of coarse outwash and has the best potential for containing an economically viable source of high quality aggregate that may be used in asphalt and concrete ready mix.

Low Potential: This is land that has deposits of either pitted outwash or finer outwash and is much less likely to contain an economically viable source of high quality aggregate that may be used in asphalt and concrete ready mix than those deposits in the high potential category.

For information on mineral extraction sites contact the Dane County Zoning Department at 608.266.4266, 608.266.9083 or zoning inspector Dan Everson at 608.267.1541.

Sept. 8th 2009

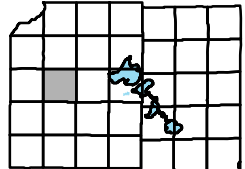


Source Info:
Cross Plains Village Boundary: 08/2009, (DCPD)
Mineral Extraction Sites: 2005, (DC Zoning)
Service Areas: 08/2009, (CARPC)
Soils: 2005, (NRCS)
Quality Sand & Gravel: UW-Geology & Payne and Dolan



This map was prepared through the Dane County Department of Planning and Development in conjunction with the Dane County Land & Water Resources Department, Dane County Land Information Office and the Capital Area Regional Planning Commission.

Town of Cross Plains Comprehensive Plan



Map 5-5: Voluntary Conservation

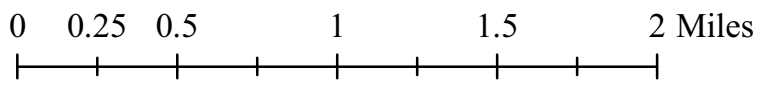
- Section Boundary
- Cross Plains Village Boundary
- Cross Plains Urban Service Area
- Existing Public Lands
- Black Earth Creek WQ Corridor*
- Ice Age Trail Corridor**
- Proposed Trails***
- Natural Resource Area Boundary***

* Village of Cross Plains Comprehensive Plan

** Ice Age Park & Trail Foundation, Dane County, WI DNR, US National Park Service

*** Dane County Parks & Open Space Plan

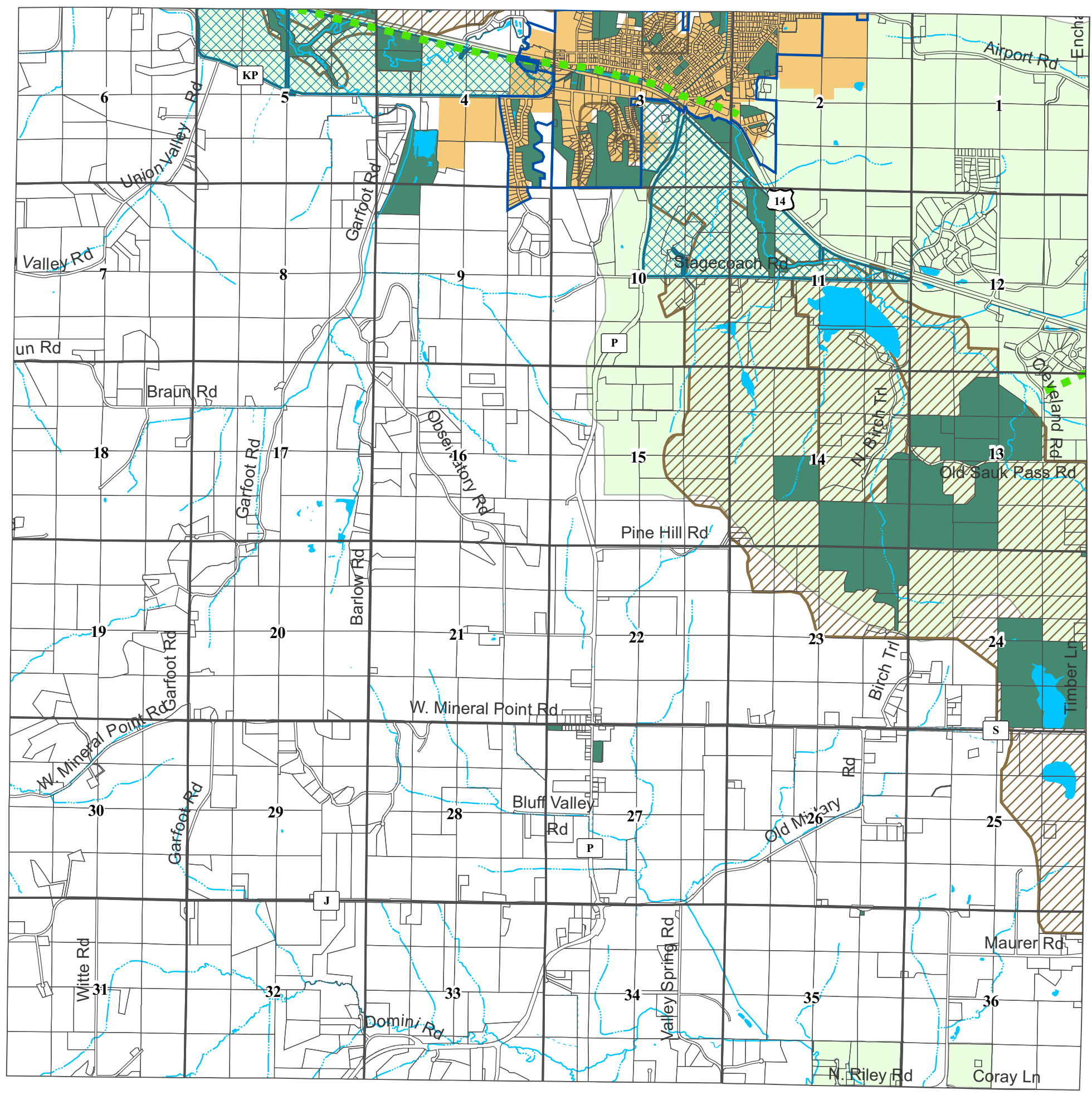
July, 2009



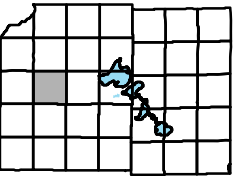
Source Info:
 Cross Plains Village Boundary: 01/07, (DCPD)
 Environmental Corridor: 04/07, (DCCAPD)
 Open Space: 2000, (DCRPC)
 Rare Species: 2004, (WIDNR)
 Service Areas: 07/07, (DCPD)
 Woodland: 2005, (DCCAPD)

DANE COUNTY PLANNING & DEVELOPMENT

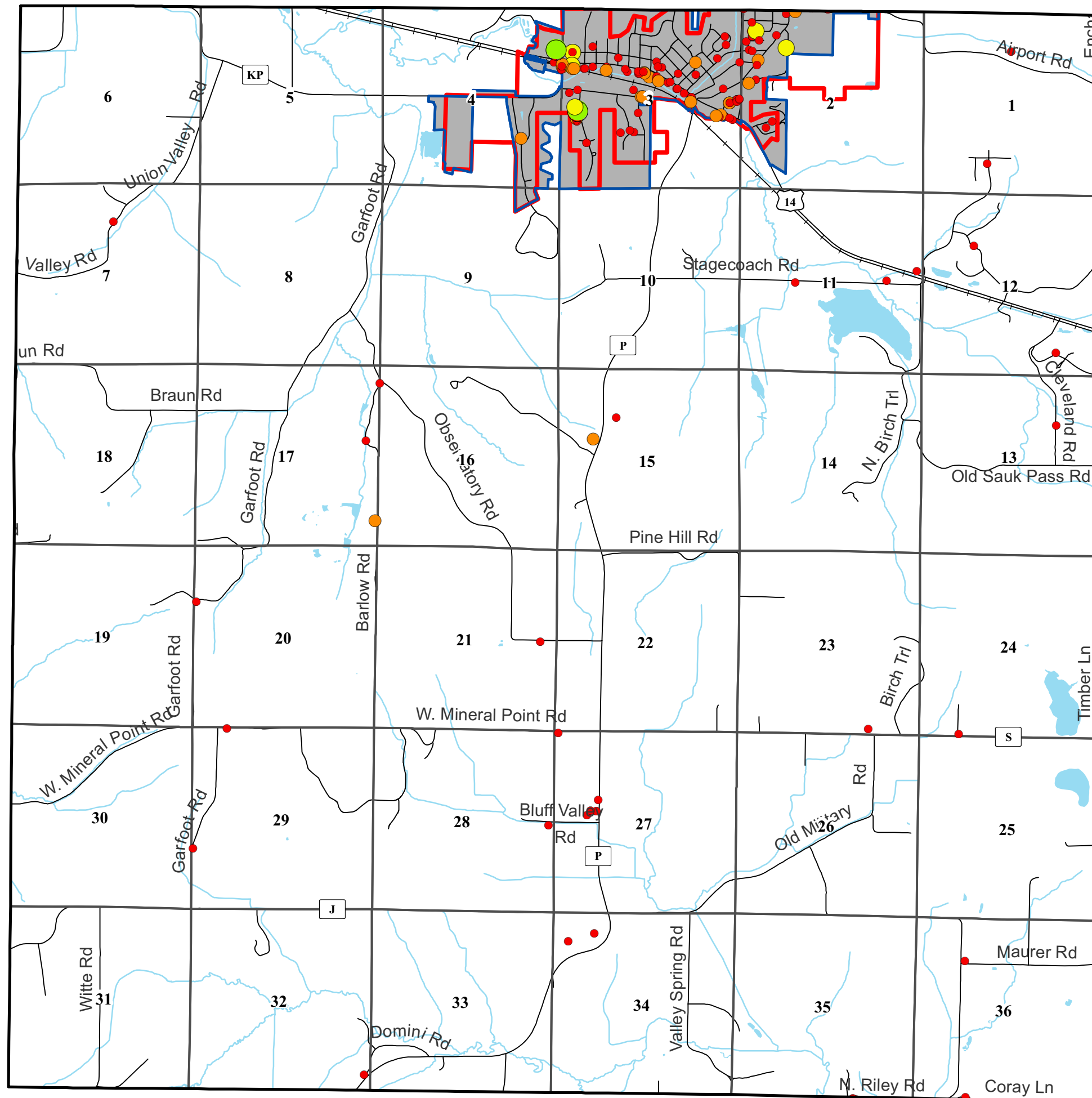
This map was prepared through the Dane County Department of Planning and Development in conjunction with the Dane County Land & Water Resources Department, Dane County Land Information Office and the Dane County Community Analysis & Planning Division.



Town of Cross Plains Comprehensive Plan



Map 6-1 Employment Points



Businesses by Number of Employees

- 0 - 10
- 11 - 50
- 51 - 250
- 251 - 1000
- 1001 - 4500

---+--- Railroad

Section Boundary

Cross Plains Urban Service Area

Village of Cross Plains

Sept. 8th 2009

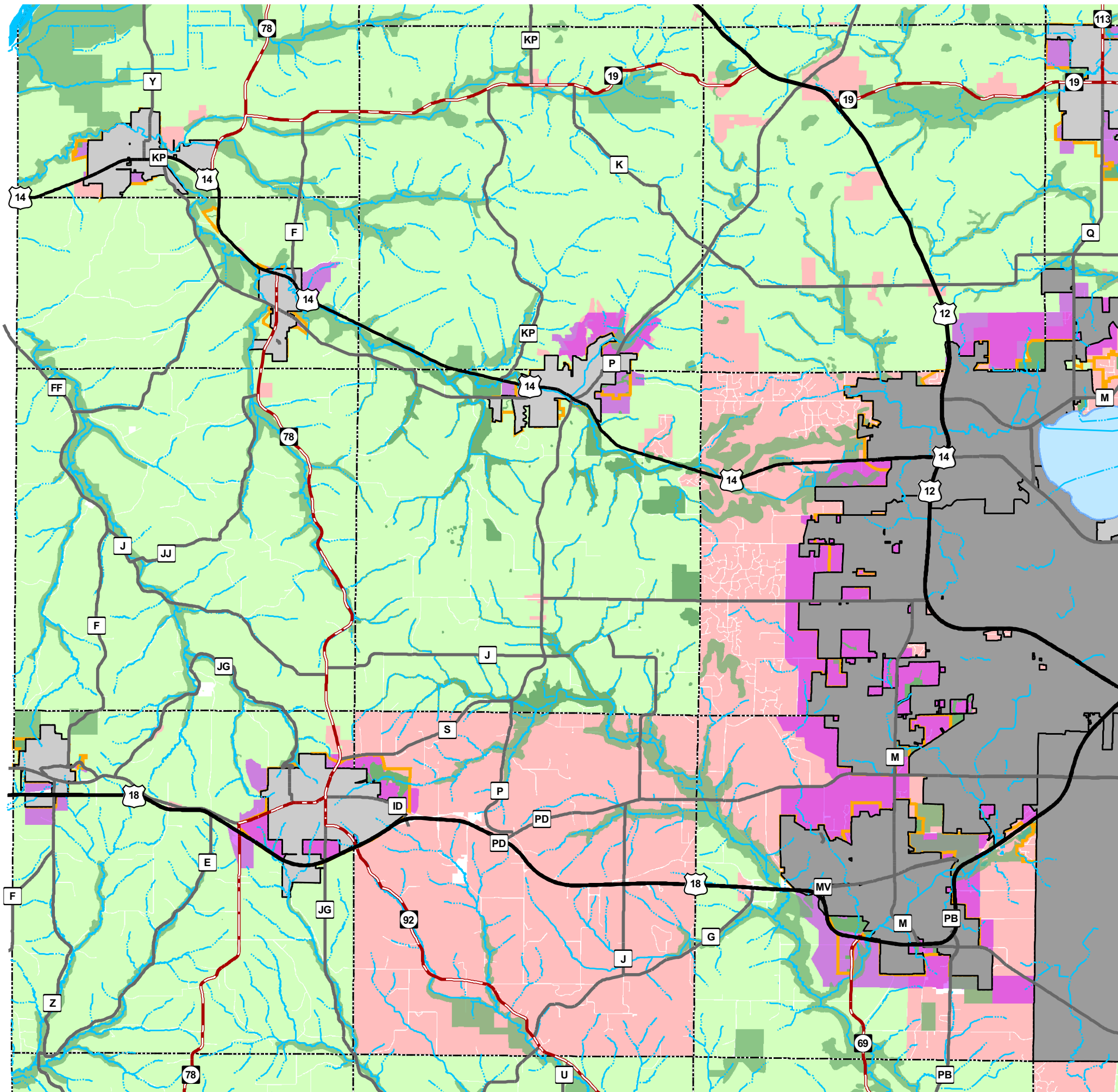
0 0.25 0.5 1 1.5 2 Miles



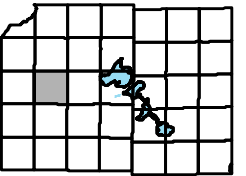
Source Info:
Cross Plains Village Boundary: 08/2009 (DCPD)
Employment Points: 2002, Claritas (MAMPO)
Service Area: 08/2009 (CARPC)

DANE COUNTY
PLANNING & DEVELOPMENT

This map was prepared through the Dane County Department of Planning and Development in conjunction with the Dane County Land & Water Resources Department, Dane County Land Information Office and the Capital Area Regional Planning Commission.



Town of Cross Plains



Map 7-1 Adopted Dane County
Comprehensive Plan - Regional

TownMerge

dccode

-  Agricultural Preservation Areas
-  Rural Development / Transition Areas
-  Town Ag. Preservation Areas
-  Urban Service Area
-  Environmental Corridor
-  Municipal Plan Extent

0 1.5 3 6 Miles

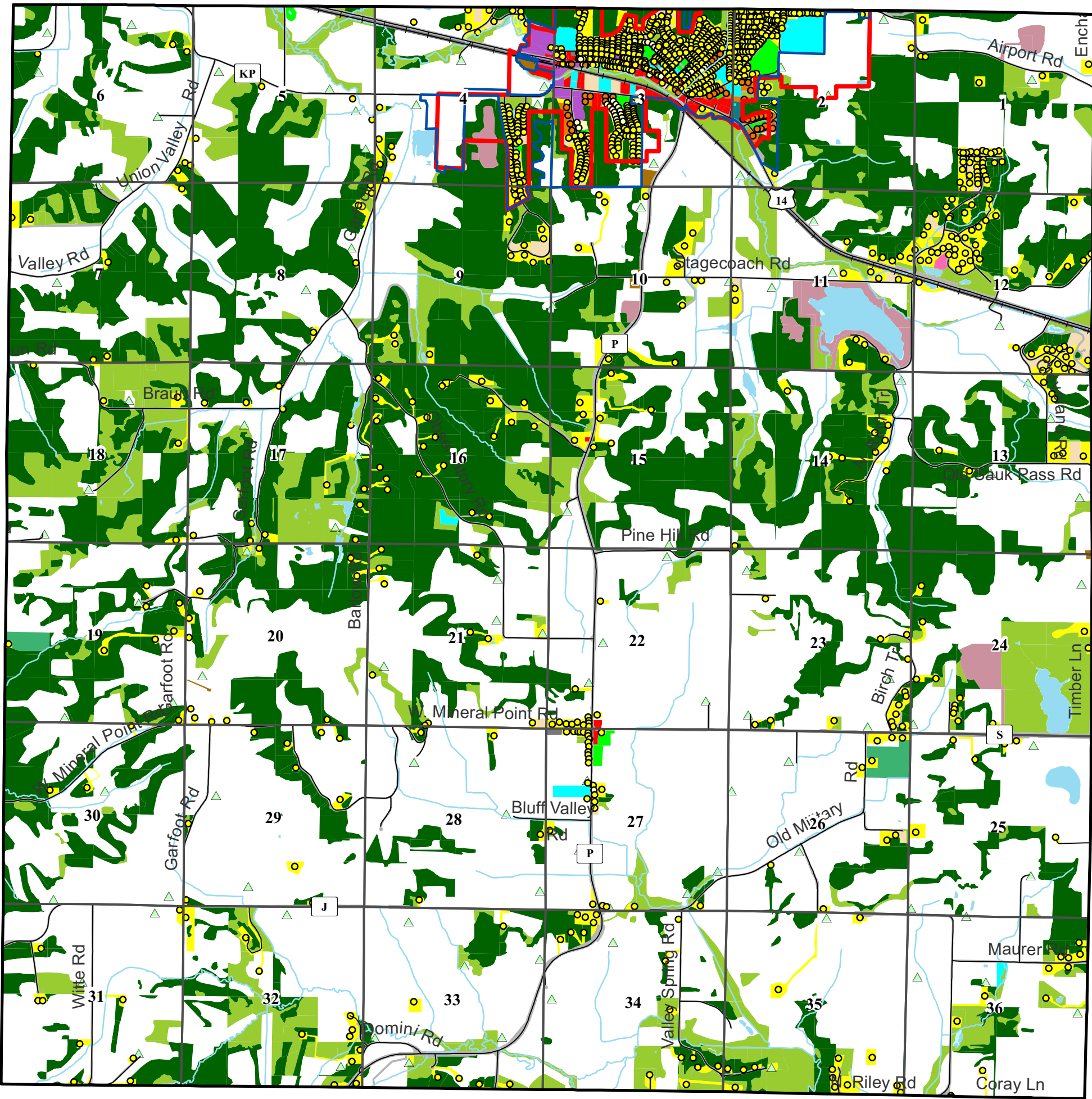
Sept. 8th 2009



Source Info:
Cross Plains Village Boundary: 09/09, (DCPD)
Environmental Corridor: 09/09, (CARPC)
Municipal Plans: 2008, (DCPD)
Open Space: 2009, (CARPC)
Service Areas: 09/09, (CARPC)

DANE COUNTY
PLANNING & DEVELOPMENT

This map was prepared through the Dane County Department of Planning and Development in conjunction with the Dane County Land & Water Resources Department, Dane County Land Information Office and the Capital Area Regional Planning Commission.



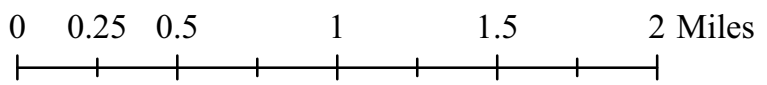
Town of Cross Plains Comprehensive Plan

Map 8-1 2005 Land Use

- Single Family
 - Two Family
 - Multi-Family
 - Farm Dwelling
 - Agricultural Accessory Building
 - Railroad
 - Section Boundary
 - Cross Plains Urban Service Area
 - Village of Cross Plains
- Land Use Categories (2005)**

 - Agriculture
 - Cemetery
 - Commercial Forest
 - Commercial Sales or Services
 - Communications or Utilities
 - Extractive
 - Industrial
 - Institutional or Governmental
 - Multi-Family
 - Open Land
 - Outdoor Recreation
 - Right of Way
 - Single Family
 - Transportation
 - Two Family
 - Under Construction
 - Vacant
 - Water
 - Woodland

Sept. 8th 2009



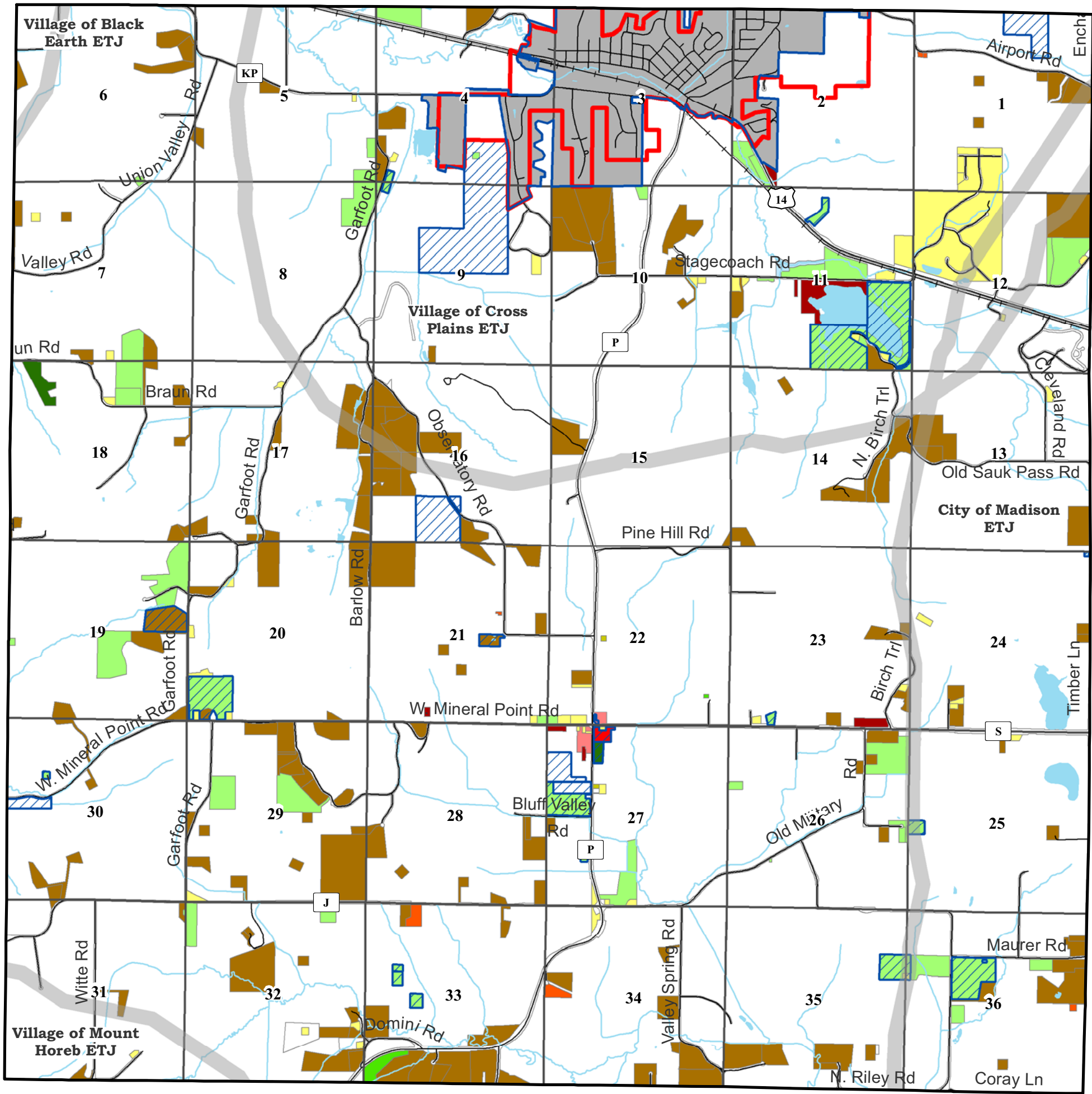
Source Info:
 Cross Plains Village Boundary: 08/2009, (DCPD)
 Land Use: 2007, (CARPC)
 Service Areas: 08/2009, (CARPC)



This map was prepared through the Dane County Department of Planning and Development in conjunction with the Dane County Land & Water Resources Department, Dane County Land Information Office and the Capital Area Regional Planning Commission.

Town of Cross Plains Comprehensive Plan

Map 8-2 Zoning



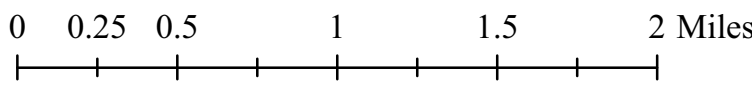
Effective Zoning Petitions (Rural)

Zoning District

- A-1 or A-1EX Agricultural
- A-2, A-2(1), A-2(2), A-2(4), A-2(8), A-3 Agricultural
- A-B Agricultural Business
- B-1 Local Business
- C-1 Light Commercial
- C-2 Heavy Commercial
- CO-1 Conservancy
- ETZ Extra-Territorial Zoning
- EXP-1 Expo
- LC-1 Limited Commercial
- M-1 Industrial
- R-1, R-1A, R-2, R-3
- R-3A, R-4
- RE-1 Recreational
- RH-1, RH-2, RH-3, RH-4
- Non-Wetland (zoned out of)
- Railroad
- Section Boundary
- Cross Plains Urban Service Area
- Village of Cross Plains

ExtraTerritorial Jurisdiction refers to land division only.

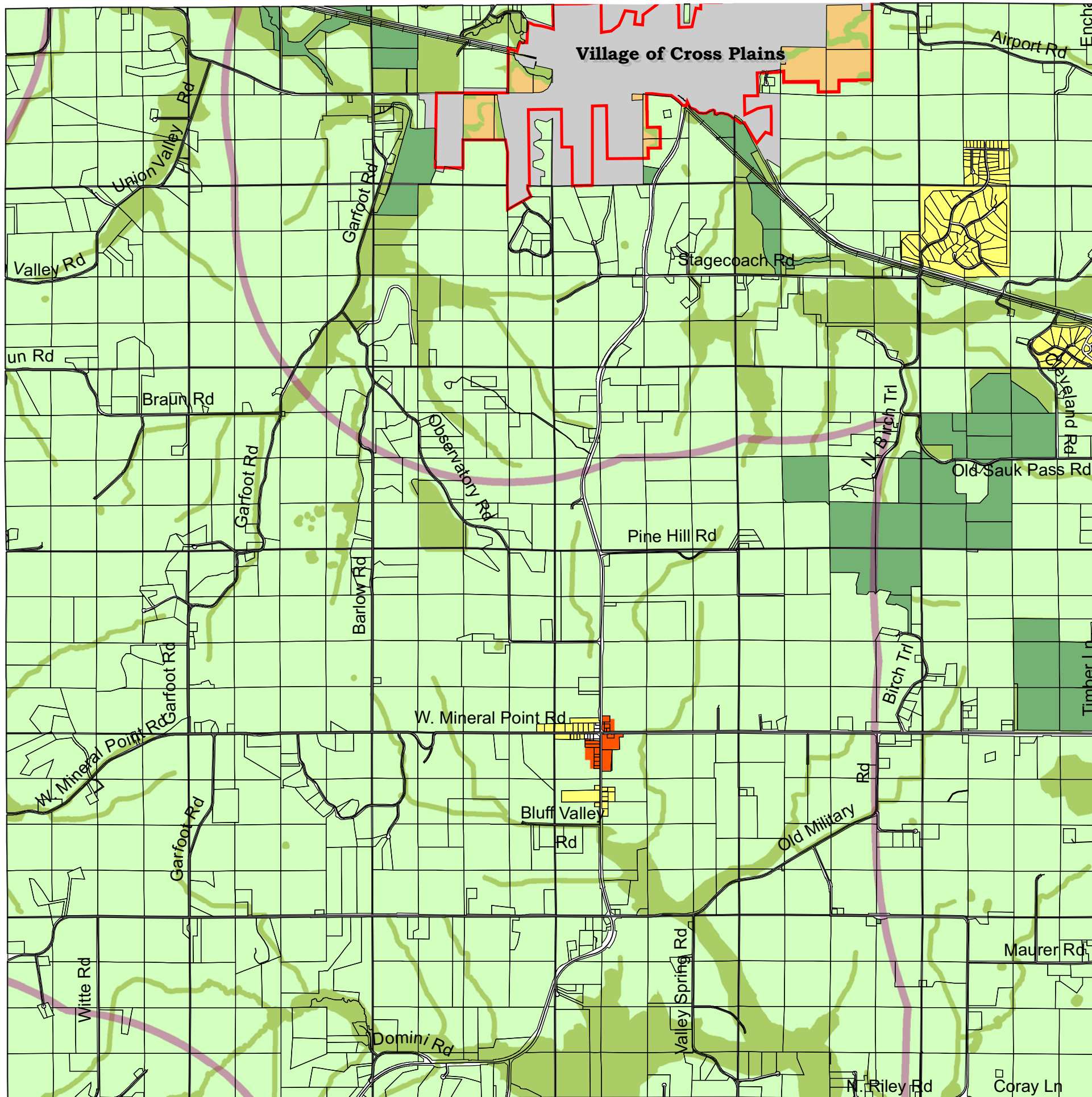
Sept. 8th 2009



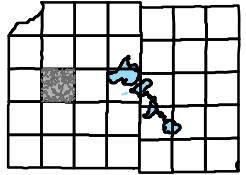
Source Info:
Cross Plains Village Boundary: 08/2009 (DCPD)
Service Area: 08/2009 (CARPC)
Zoning: 08/2009 (DCPD)

DANE COUNTY
PLANNING & DEVELOPMENT

This map was prepared through the Dane County Department of Planning and Development in conjunction with the Dane County Land & Water Resources Department, Dane County Land Information Office and the Capital Area Regional Planning Commission.



Town of Cross Plains Comprehensive Plan



Map 8-3 Planned Land Use

- Parcels
- Agricultural Preservation District
- Environmental & Resource Protection District
- Public Lands District
- Pine Bluff Crossroads District
- Rural Residential District
- City or Village ETJ

- Cross Plains Urban Service Area
- Railroad
- Road Centerlines
- Section Boundary
- Village of Cross Plains

Sept. 8th 2009

0 0.25 0.5 1 1.5 2 Miles

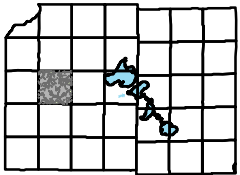


Source Info:
Cross Plains Village Boundary: 08/2009, (DCPD)
Land Use: 2007, (CARPC)
Service Areas: 08/2009, (CARPC)

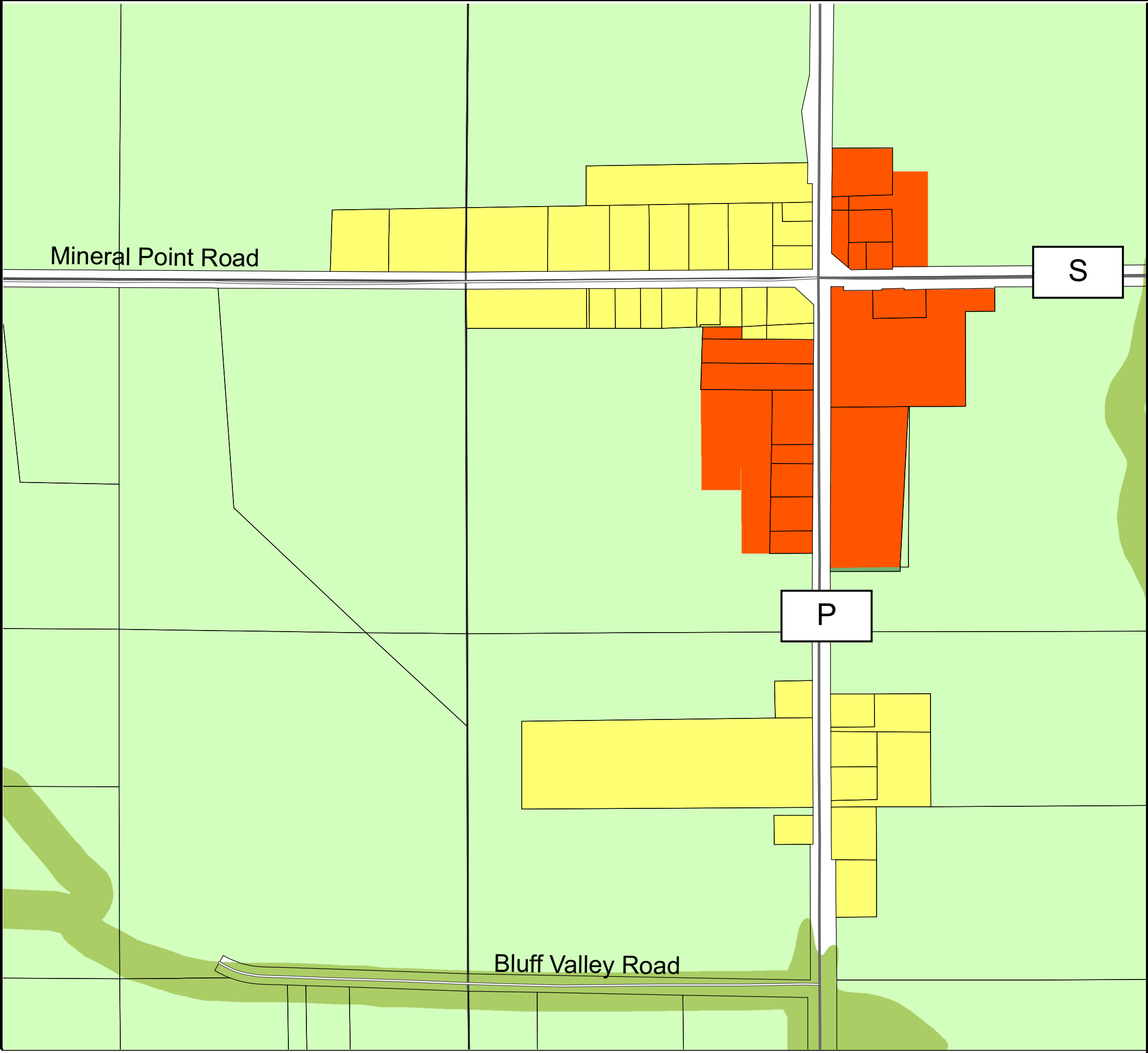
DANE COUNTY
PLANNING & DEVELOPMENT

This map was prepared through the Dane County Department of Planning and Development in conjunction with the Dane County Land & Water Resources Department, Dane County Land Information Office and the Capital Area Regional Planning Commission.

Town of Cross Plains Comprehensive Plan

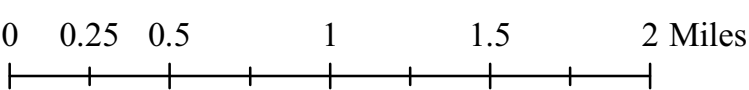


Map 8-4 Planned Land Use
Pine Bluff Area



- Parcels
- Agricultural Preservation District
- Environmental & Resource Protection District
- Public Lands District
- Pine Bluff Crossroads District
- Rural Residential District
- City or Village ETJ

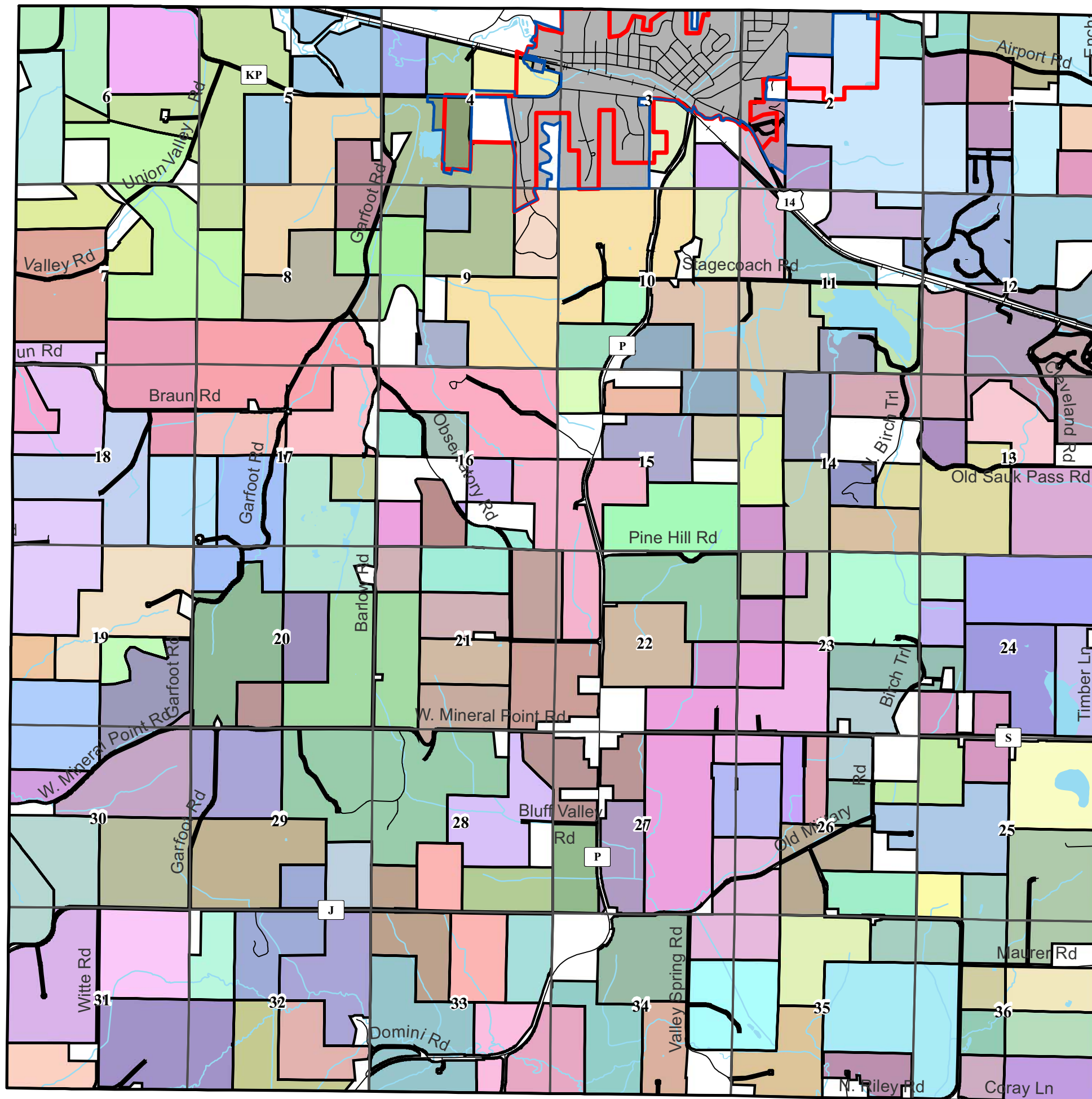
Sept. 8th 2009



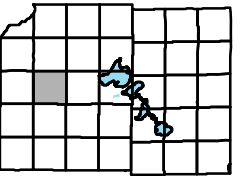
Source Info:
Cross Plains Village Boundary: 08/2009, (DCPD)
Service Areas: 08/2009, (CARPC)



This map was prepared through the Dane County Department of Planning and Development in conjunction with the Dane County Land & Water Resources Department, Dane County Land Information Office and the Capital Area Regional Planning Commission.



Town of Cross Plains Comprehensive Plan



Map 8-5 1981 Farmsteads

- 1981 Farmsteads
- Railroad
- Section Boundary
- Cross Plains Urban Service Area
- Village of Cross Plains

Sept. 8th 2009

0 0.25 0.5 1 1.5 2 Miles



Source Info:
Cross Plains Village Boundary: 08/2009, (DCPD)
Original Farmsteads: 2003, (DCPD)
Service Areas: 08/2009, (CARPC)

DANE COUNTY
PLANNING & DEVELOPMENT

This map was prepared through the Dane County Department of Planning and Development in conjunction with the Dane County Land & Water Resources Department, Dane County Land Information Office and the Capital Area Regional Planning Commission.