

Exhibit 4C Protected Areas

(Commercial/Industrial
Territory of the Town Not
Subject to Early Detachment)

Town of Burke
Village of DeForest
City of Sun Prairie and
City of Madison
Cooperative Plan
December 2006

----- Final Boundary Line

■ Protected Areas

Jurisdictions

■ Existing City of Madison

Data Source:
City of Madison Department of Planning and Development, Planning Unit

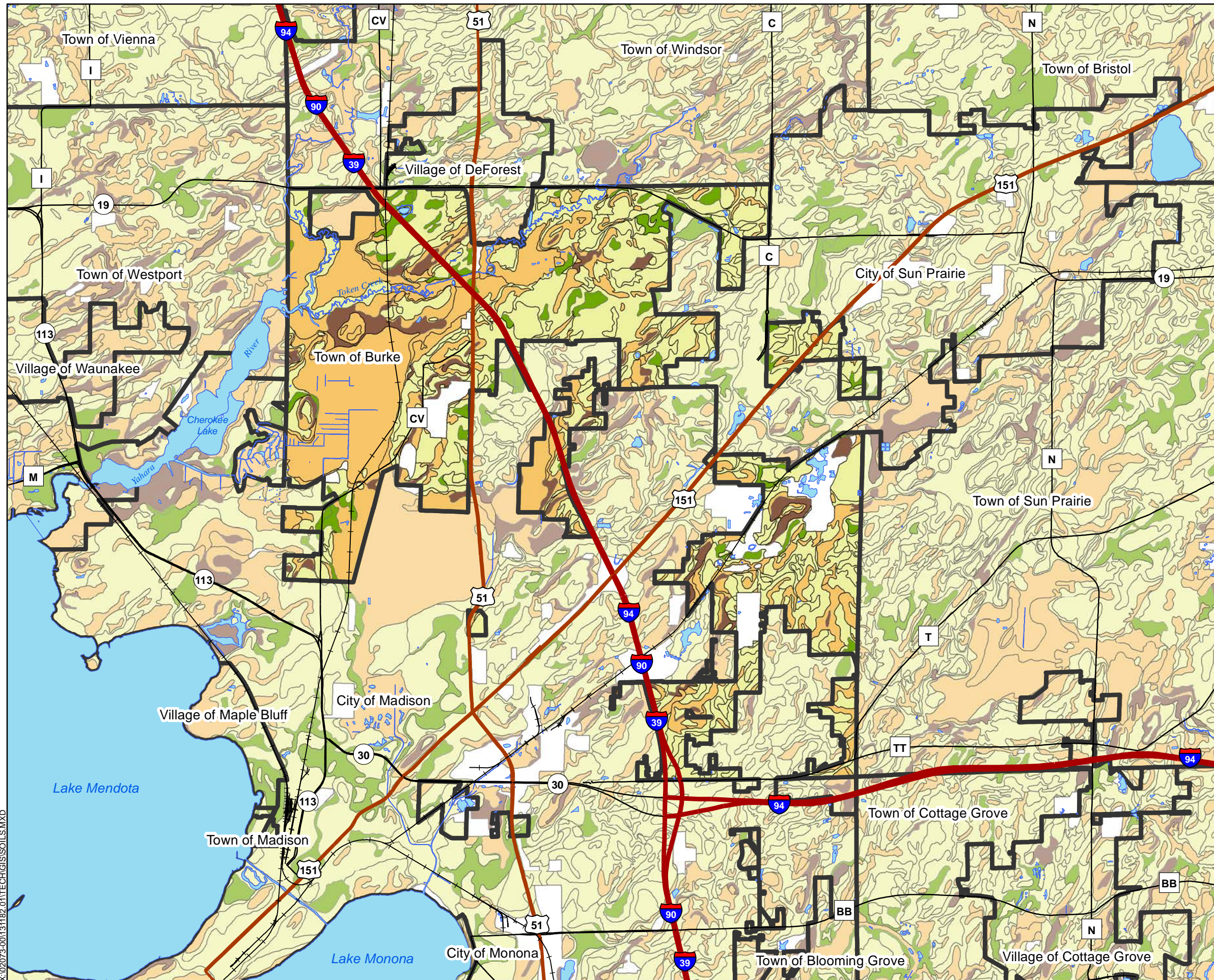
0 1,000 2,000
Feet



Town of Burke Comprehensive Plan

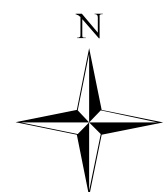
Map 5: Soils

June 7, 2013



Legend

- Municipal Boundaries
- Water
- Soil Capability Class**
 - Capability Class I
 - Capability Class II
 - Capability Class III
 - Capability Class IV - VIII
 - Not Rated or not available



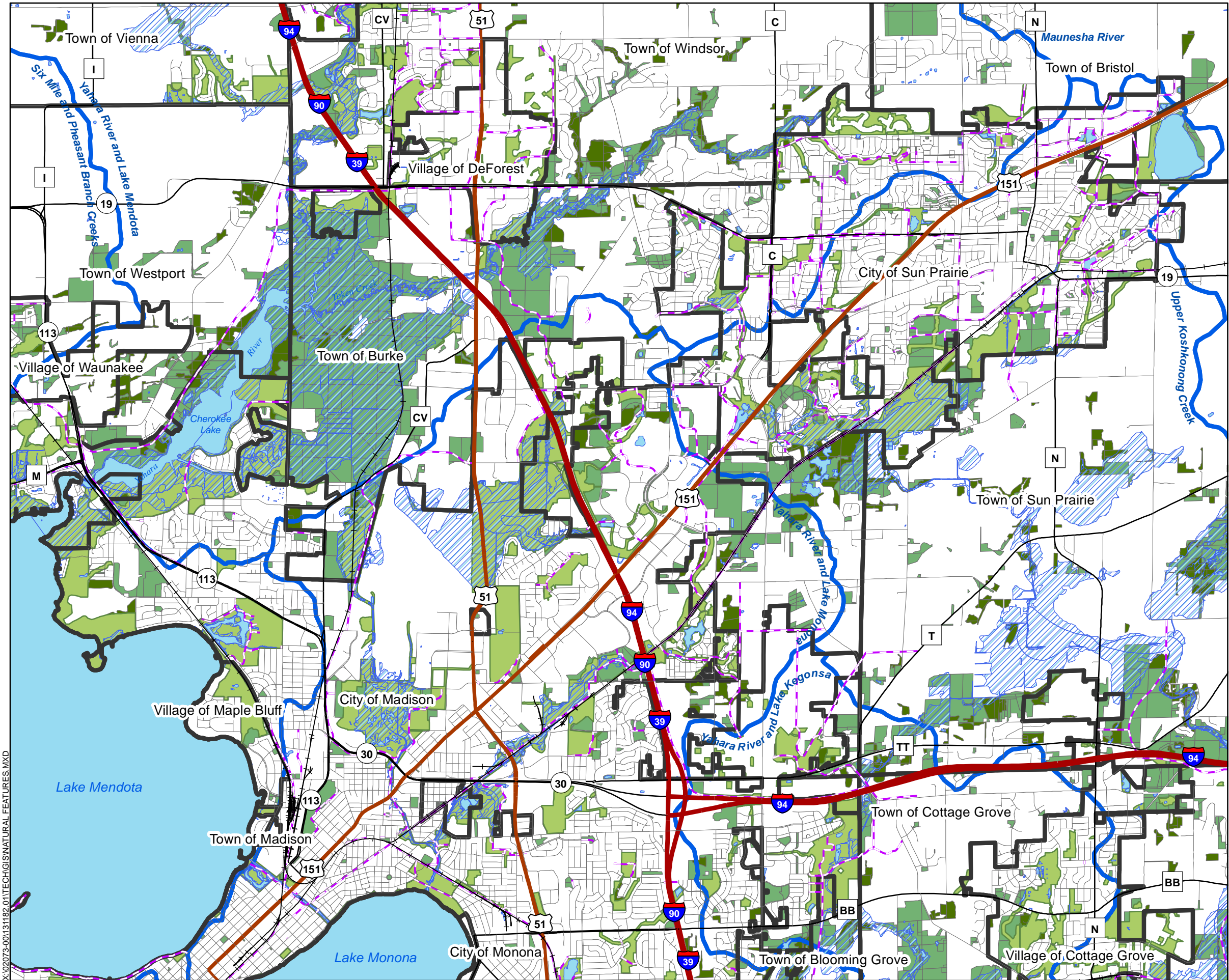
0 0.5 1 2 Miles

These documents shall not be used for any purpose or project for which it is not intended. Mead & Hunt shall be indemnified by the client and held harmless from all claims, damages, liabilities, losses, and expenses, including attorneys' fees and costs, arising out of such misuse or reuse of the documents. Any other use or reuse by owner or by others will be at owner's sole risk and without liability or legal exposure to Mead & Hunt. In addition, unauthorized reproduction of these documents, in part or as a whole, is prohibited.



TOWN OF BURKE

Mead
& Hunt



Town of Burke
Comprehensive Plan

Map 6: Natural Features

June 27, 2013

Legend

- Municipalities
- Floodplain
- Watershed Boundaries
- Water
- Slopes > 12%
- Environmental Corridor
- Open Space/Recreation (including wetlands)
- Woodlands
- Trails



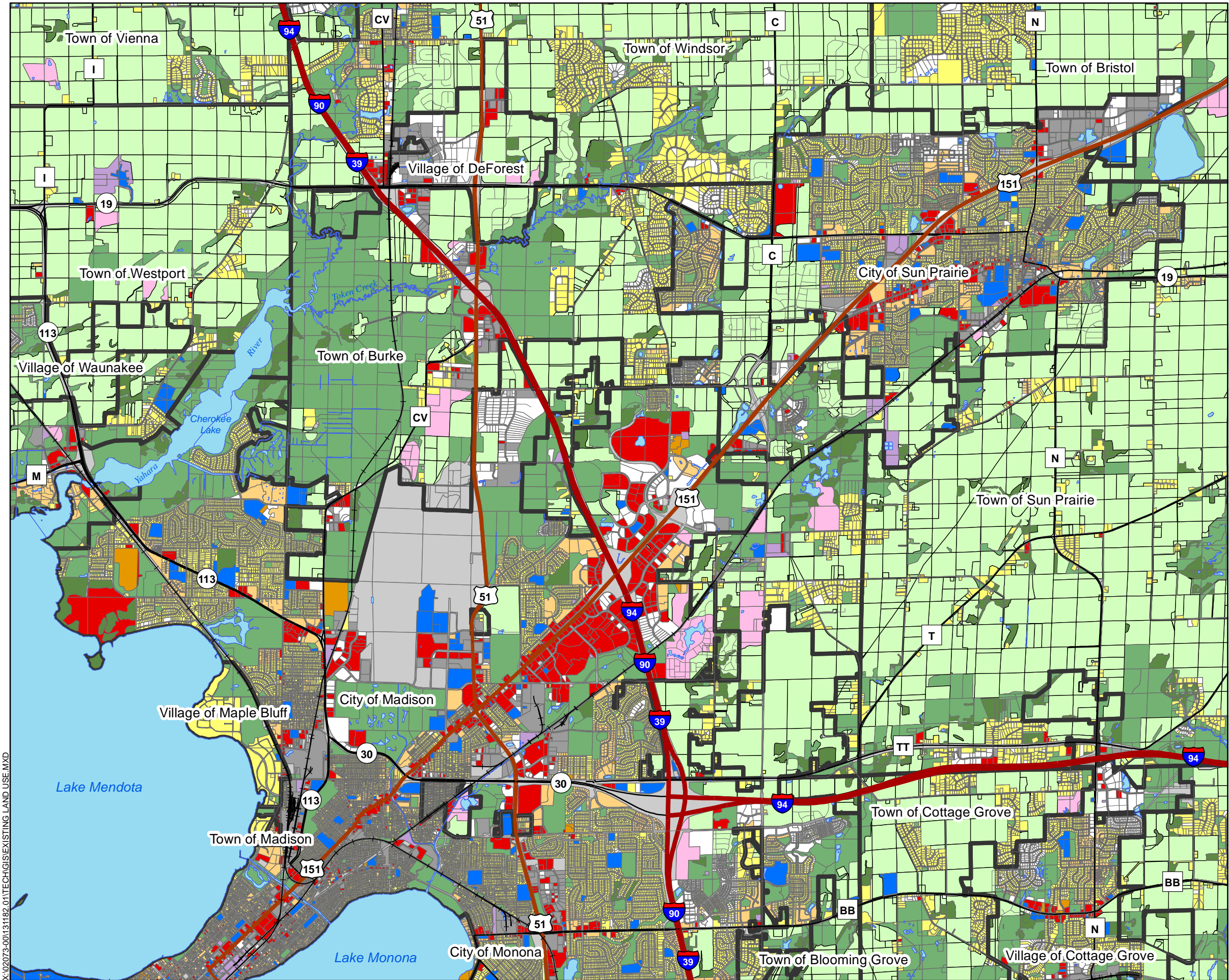
0 0.5 1 2 Miles

These documents shall not be used for any purpose or project for which it is not intended. Mead & Hunt shall be indemnified by the client and held harmless from all claims, damages, liabilities, losses, and expenses, including attorneys' fees and costs, arising out of such misuse or reuse of the documents. Any other use or reuse by owner or by others will be at owner's sole risk and without liability or legal exposure to Mead & Hunt. In addition, unauthorized reproduction of these documents, in part or as a whole, is prohibited.



TOWN OF BURKE





Town of Burke Comprehensive Plan

Map 7: Existing Land Use

June 27, 2013

Legend

- Municipal Boundaries
- Land Use
 - Agriculture
 - Single-Family Residential
 - Multi-Family Residential
 - Mixed Residential
 - Transportation
 - Industrial
 - Extractive
 - Utilities
 - Commercial/Office
 - Institutional
 - Open Space/Recreational
 - Woodlands
 - Vacant/Under Development
 - Water



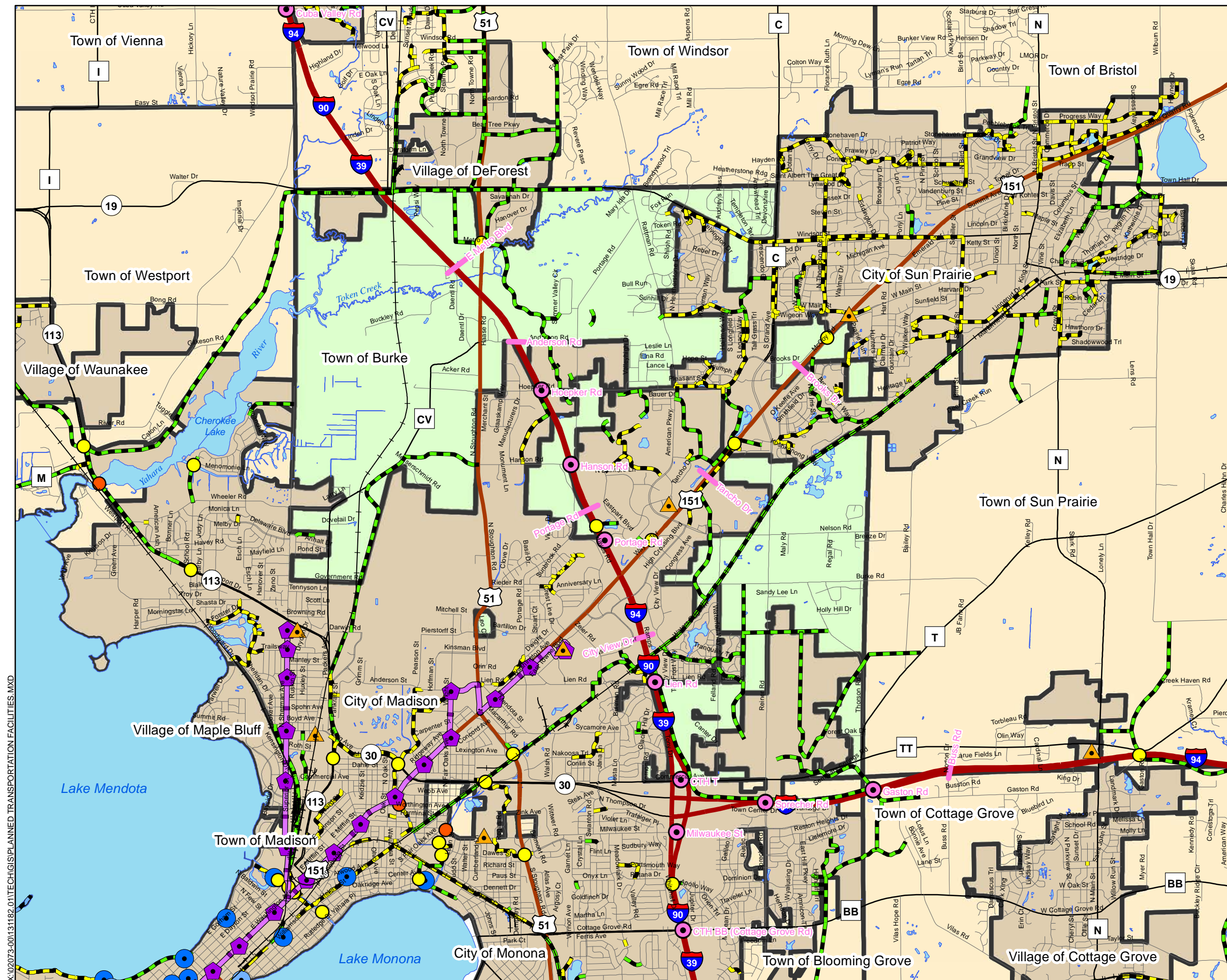
0 0.5 1 2 Miles

These documents shall not be used for any purpose or project for which it is not intended. Mead & Hunt shall be indemnified by the client and held harmless from all claims, damages, liabilities, losses, and expenses, including attorneys' fees and costs, arising out of such misuse or reuse of the documents. Any other use or reuse by owner or by others will be at owner's sole risk and without liability or legal exposure to Mead & Hunt. In addition, unauthorized reproduction of these documents, in part or as a whole, is prohibited.

Town of Burke Comprehensive Plan

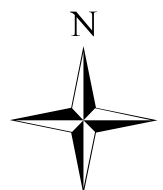
Map 9: Planned Transportation Facilities

June 27, 2013



Legend

- Town of Burke
 - City and Village Boundaries
 - Other Municipal Boundaries
 - Interstate Highway
 - US Highway
 - Major Roads
 - Local Road
 - Rail
 - 39/90/94 TIA Potential New Interchanges
 - 39/90/94 TIA Potential New Crossing Locations
 - Park & Ride Facility
 - Proposed Bus Rapid Transit Stations
 - Proposed Bus Rapid Transit Route
- ### Bike Facilities
- Bridge or Interchange
 - Overpass or Underpass
- ### Madison B-cycle Locations
- Existing
 - Planned; Programmed; Proposed; Under Construction
- ### Trails
- Existing Bike Path
 - Proposed Bike Path
 - Hiking - No Bikes
 - Pedestrian Path
 - Under Construction



0 0.5 1 2 Miles

These documents shall not be used for any purpose or project for which it is not intended. Mead & Hunt shall be indemnified by the client and held harmless from all claims, damages, liabilities, losses, and expenses, including attorneys' fees and costs, arising out of such misuse or reuse of the documents. Any other use or reuse by owner or by others will be at owner's sole risk and without liability or legal exposure to Mead & Hunt. In addition, unauthorized reproduction of these documents, in part or as a whole, is prohibited.



TOWN OF BURKE

Mead & Hunt

Map 10: School Districts

Legend

-

