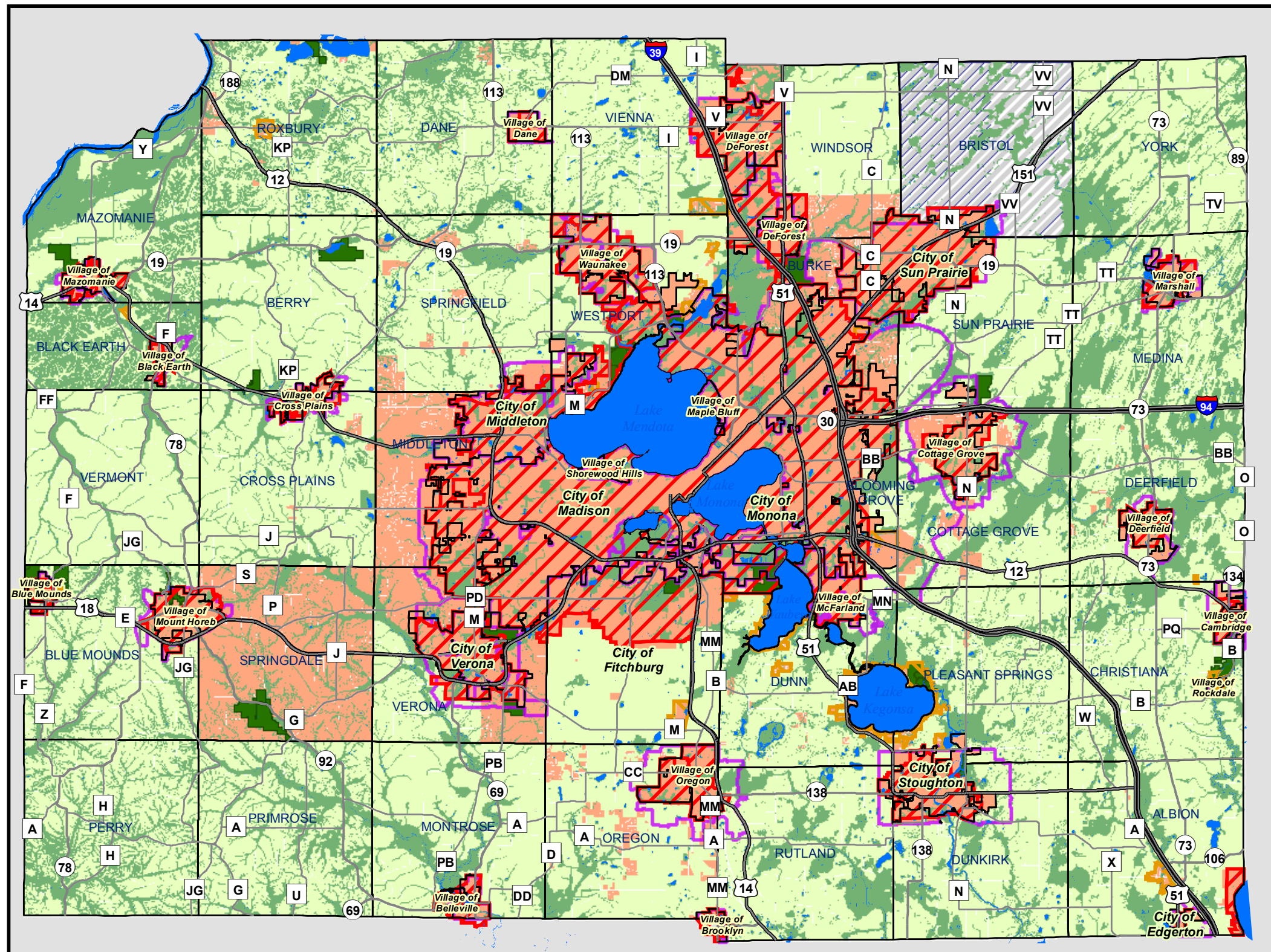
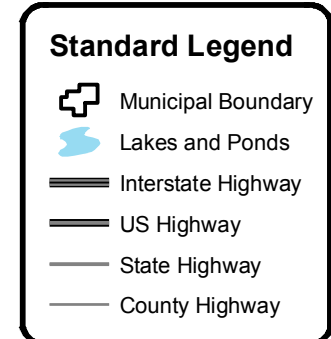
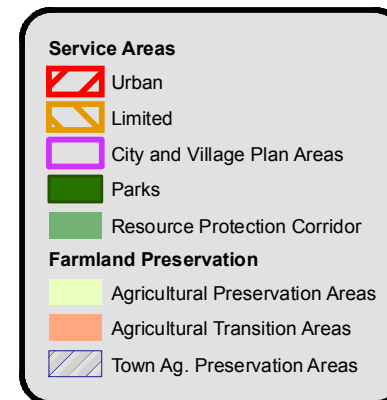




Dane County Comprehensive Plan
Dept. of Planning & Development
210 Martin Luther King Jr. Blvd.
Room 116
Madison, WI 53703



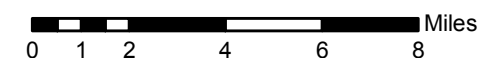
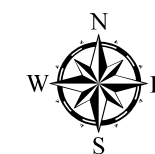
What you're looking at ...

- Growth factors in Dane County:
1. Farmland Preservation Plan
 2. Service Areas
 3. Env. and Resource Protection Corridors
 4. Overlapping Plans
 5. Parks and Open Space

***See plan text for details on the map categories.**

Map revised: Sept. 2014

- For more information on individual features:
1. http://www.countyofdane.com/PLANDEV/planning/farm_preservation.aspx
 2. <http://www.capitalarearpc.org>
 3. <https://www.countyofdane.com/PLANDEV/planning/>
 4. See the local plans for details and Wis Stat 59.69 and 66.1001.
 5. <http://www.countyofdane.com/lwr/parks/planning.aspx>



Source Info: Environmental and Resource Protection Corridors; 2014 (CARPC), Road Network: 2014, Parcel Derived (DCLIO). Municipal Boundaries & Water: 2014, Parcel Derived (DCLIO).

This map was prepared through the Department of Planning and Development in conjunction with the Land Conservation Department, Land Information Office and the Capital Area Regional Planning Commission.

www.daneplan.org

Planned Land Use